



[Applications/Markets](#)

[Products](#)

[Services](#)

[Certifications](#)

[About us](#)

[Home](#)



Powder coating solutions



Celebrating

15
YEARS
2000-2015



[Applications/Markets](#)

[Products](#)

[Services](#)

[Certifications](#)

[About us](#)

[Home](#)



Applications/Markets



- Architecture
- Automotive
- General industry
- ACE Off Road
- Electrical & Lighting
- Appliances
- Furniture
- Glass & Ceramic
- Anticorrosion
- Functional
- Specialities



Celebrating

15
YEARS
2000-2015



[Applications/Markets](#)

[Products](#)

[Services](#)

[Certifications](#)

[About us](#)

[Home](#)



Architecture

RIPOL offers a complete range of architectural powder coating systems based on durable and super durable polyester resins. These products are formulated especially for aluminum, steel and galvanized steel applications. They have excellent mechanical, weathering resistance properties and durability to withstand outdoor environment conditions. The range includes a variety of finishes and effects and are marketed under the trade name **RIPOL Series 5**. They are designed to meet **QUALICOAT** and **GSB** specifications to ensure excellent performance and color consistency. Can also be used for the protection and decoration of indoor

- [Architecture](#)
- [Automotive](#)
- [General industry](#)
- [ACE Off Road](#)
- [Electrical & Lighting](#)
- [Appliances](#)
- [Furniture](#)
- [Glass & Ceramic](#)
- [Anticorrosion](#)
- [Functional Specialities](#)

Series 59L HWF Façade Polyester

Highly weather-resistant Polyestersystems
Weathering Class 2 / GSB Master

Series 5 PEA Classic Façade Polyester

Weather-resistant Polyester systems
Weathering Class 1 / Qualicoat Class 1 / GSB Standard

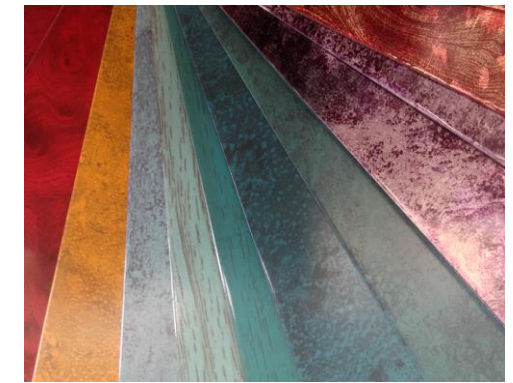
Series 5 SUBLIMA SBCR

Powder Coating Systems for the Dye Sublimation Technology

Series 59 HWF



- Aluminum profiles,
- Window Frames,
- Doors and Facades
- Garden Furniture, Verandas
- Sun Shades and Shutters
- Steel or galvanized steel for cladding
- Balustrades and Hand Rails
- Garage Doors
- Fencing and Railings
- Ceiling Tiles





[Applications/Markets](#)

[Products](#)

[Services](#)

[Certifications](#)

[About us](#)

[Home](#)



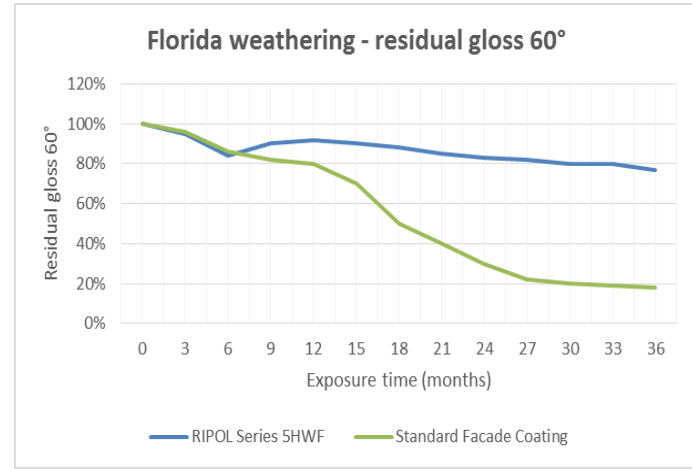
- [Architecture](#)
- [Automotive](#)
- [General industry](#)
- [ACE Off Road](#)
- [Electrical & Lighting](#)
- [Appliances](#)
- [Furniture](#)
- [Glass & Ceramic](#)
- [Anticorrosion](#)
- [Functional Specialities](#)

Architecture

Series 59L HWF Façade Polyester

Highly weather-resistant Polyester powder coating systems for facades. RIPOL Series 59L series is particularly suited to severe UV exposure conditions in accordance with the inspection and quality guidelines as per GSB Master and/or Qualicoat Class 2 corresponding to three-year Florida outdoor exposure. RIPOL Series 59L offers significantly higher gloss retention and resistance to color change combined with maximum film integrity and outstanding mechanical properties to ensure long-term aesthetic and functional protection. For higher requirements in corrosion protection on steel bases, the application of a powder Double Layer system is recommended with the same weathering capabilities and consisting of suitable RIPOL Primers and RIPOL Series 59L.

Weathering Class 2 / GSB Master



- **Very High weathering resistance/protection**
- **Easy application**
- **Good surface flow**
- **Excellent coverage and chargeability**
- **Minimal picture frame effect**
- **High recycling rates**
- **No toxic contents**
- **TGIC-free - heavy metals free**
- **Environment-friendly production**
- **Good storage stability**

Series 59 HWF

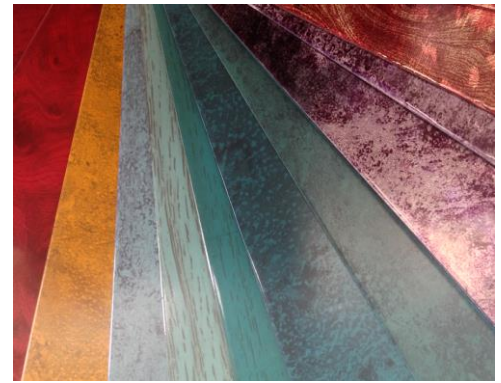


Architecture

Series 5 Sublima SBCR

Powder Coating Systems for the Dye Sublimation Technology

Dye Sublimation: the process of transferring three-dimensional images onto parts and products, known as dye sublimation, has been successfully applied to powder coated products. With **RIPOL SUBLIMA**, high-resolution images, designs, and wood-grain looks can be transferred to a variety of powder coated products made of aluminum, steel, and glass. **RIPOL SUBLIMA** powder coatings are specially formulated to accept ink via the sublimation process without issues relating to paper sticking to the surface of the coating. Endless effects and patterns such as wood grain, marble, granite, custom designs or photographic pictures can be transferred onto **RIPOL SUBLIMA** powder coated surfaces. The powders work with film from all the major suppliers. Film is available in hundreds of patterns.



- [Architecture](#)
- [Automotive](#)
- [General industry](#)
- [ACE Off Road](#)
- [Electrical & Lighting](#)
- [Appliances](#)
- [Furniture](#)
- [Glass & Ceramic](#)
- [Anticorrosion](#)
- [Functional](#)
- [Specialities](#)

- **Easy application - provides excellent edge**
- **coverage on conventional and multi-faceted pieces**
- **Consistent quality across and between different parts**
- **Good surface flow**
- **Excellent coverage and chargeability**
- **No toxic contents –TGIC-free; heavy metals free**
- **Environment-friendly – no solvents emission**
- **Good storage stability**



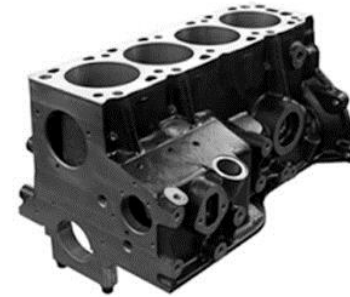
- [Architecture](#)
- [Automotive](#)
- [General industry](#)
- [ACE Off Road](#)
- [Electrical &](#)
- [Lighting](#)
- [Appliances](#)
- [Furniture](#)
- [Glass & Ceramic](#)
- [Anticorrosion](#)
- [Functional](#)
- [Specialities](#)

Automotive

To meet industry's high demands for function and design, high-performance coating systems are available for parts and components used throughout the automotive industry. We consistently tailor our products to the needs and requirements of our customers. We can formulate coating systems for commercial vehicles, buses, and trains offering excellent protection as well as high color accuracy and gloss stability. RIPOL powder coatings are also used for interiors and to coat special parts under extreme wear and tear.

Our products cover the following segments:

- Trailers and constructors
- Automotive
- Bus manufacturers
- Heavy duty truck industry
- Rail industry



Car Wheels

Includes a wide range of primers and coating systems for aluminum wheels.

Products are fine-tuned for different application conditions to provide the best possible basis for subsequent coatings. This portfolio offers a complete set of products tailor-made for the Aftermarket industry.

Functional Automotive

Developed for extreme resistance to chemicals and corrosion .This line provides outstanding resistance to aggressive agents, as is used for brake cables, engine blocks, steel springs and other under the hood components.





[Applications/Markets](#)

[Products](#)

[Services](#)

[Certifications](#)

[About us](#)

[Home](#)



General industry

RIPOL provides a broad range of efficient, economical and environmental friendly powder coating solutions for **General Industrial Applications**. They are designed for both indoor and outdoor applications and offer good mechanical properties, good anticorrosion protection, excellent coverage and a wide selection of colors and textures.

- [Architecture](#)
- [Automotive](#)
- [General industry](#)
- [ACE Off Road](#)
- [Electrical & Lighting](#)
- [Appliances](#)
- [Furniture](#)
- [Glass & Ceramic](#)
- [Anticorrosion](#)
- [Functional](#)
- [Specialities](#)

- Shelving and warehouse
- Radiators
- Air conditioning
- Machine parts

- Fences and railings
- Rail Traffic
- Heavy road traffic

RIPOL PF Series
Polyester Systems for Coil Coating
& Post Forming Technology

Post-Forming
 Technology

Specialties

- Scratch resistant
- Anti Bacterial properties
- Out-gassing properties
- Thin-film coatings





[Applications/Markets](#)

[Products](#)

[Services](#)

[Certifications](#)

[About us](#)

[Home](#)

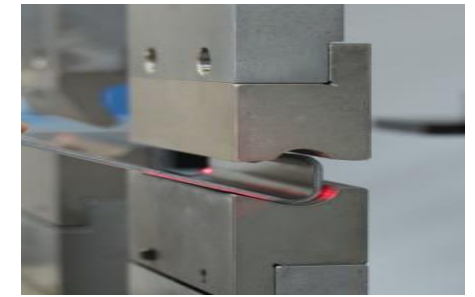


General industry

RIPOL PF Series

Polyester Systems for Coil Coating & Post Forming Technology

RIPOL PF Series includes high performance, powder paint systems with enhanced reactivity, specifically designed for the Powder Coil technology and for Post-Forming after powder coating. PF Series is designed for exterior applications. It combines excellent hardness and performance characteristics while retaining formability. Applications include appliances, furniture and perforated or embossed metal.



Post-Forming
Technology

- [Architecture](#)
- [Automotive](#)
- [General industry](#)
- [ACE Off Road](#)
- [Electrical & Lighting](#)
- [Appliances](#)
- [Furniture](#)
- [Glass & Ceramic](#)
- [Anticorrosion](#)
- [Functional Specialities](#)



[Applications/Markets](#)

[Products](#)

[Services](#)

[Certifications](#)

[About us](#)

[Home](#)



- [Architecture](#)
- [Automotive](#)
- [General industry](#)
- [ACE Off Road](#)
- [Electrical & Lighting](#)
- [Appliances](#)
- [Furniture](#)
- [Glass & Ceramic](#)
- [Anticorrosion](#)
- [Functional](#)
- [Specialities](#)



ACE Off Road

Agricultural, Construction and Earth moving equipment

Lawn and Garden

With the ACE Series RIPOL provides powder coating systems that meet the industrial corrosion resistance standards of the Agricultural, Construction and Earth moving equipment sector. They are based on **multi-durable Polyester-based systems** which guarantee successful performances, even in challenging conditions. The manufacturing process involves a tight color and gloss control procedure and the products are formulated to meet the highly demanding mechanical requirements (adhesion, hardness, flexibility, impact resistance) and to provide excellent edge protection by applying even a single-coat system. They also offer good resistance to the most common chemical agents used in this specific market. A wide range of parts made of different substrates such as aluminum, steel and galvanized steel are used in this sector.

For steel parts, a **RIPOL "double-coat"** system is recommended (the system comprises a corrosion-protecting powder primer and a **RIPOL ACE Series** polyester finish coat).

RIPOL ACE Series consists of two topcoat performance classes : **Series 59L** and **Series 69L** . You can also choose from different levels of durability to find the perfect match for your ACE component or part.

- Tractors,
- Combine harvesters,
- Ploughs,
- Crane and excavators
- Forklifts,
- Trailers,
- Trucks,
- Off-road equipment and machinery



**CONSTRUCTION
EQUIPMENT.**

**Farm
Equipment**

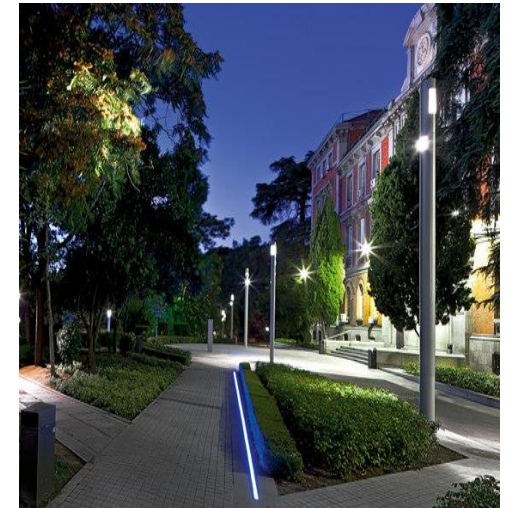


- [Architecture](#)
- [Automotive](#)
- [General industry](#)
- [ACE Off Road](#)
- [Electrical & Lighting](#)
- [Appliances](#)
- [Furniture](#)
- [Glass & Ceramic](#)
- [Anticorrosion](#)
- [Functional](#)
- [Specialities](#)

Electrical & Lighting

RIPOL offers tailor-made powder coating solutions for the electrical segment. Polyester or epoxy-polyester-based powder coatings are employed depending on whether component is to be used for interior or exterior application. For the Lighting industry RIPOL offers products specifically designed to meet the complex requirements of this sector (durability, corrosion protection, yellowing resistance, and superior design).

- Interior lighting systems
- Urban lighting systems
- Electrical control panels,
- Transformers





- [Architecture](#)
- [Automotive](#)
- [General industry](#)
- [ACE Off Road](#)
- [Electrical & Lighting](#)
- [Appliances](#)
- [Furniture](#)
- [Glass & Ceramic](#)
- [Anticorrosion](#)
- [Functional](#)
- [Specialities](#)

Appliances

The standards for the aesthetic quality of the finishes along with the demand for various colors and special effects are continuously increasing in the Appliances sector.

RIPOL can develop tailor-made powder coating finishes that combine aesthetics with durability. RIPOL Series 1 includes standard and special effect finishes that meet the latest trends in design, décor, and colors.

The products are available in a wide array of standard and custom-colors.



- **Refrigerators,**
- **Washing machines**
- **Dishwashers**
- **Microwave ovens**
- **Air conditioning**
- **Ironing boards**





[Applications/Markets](#)

[Products](#)

[Services](#)

[Certifications](#)

[About us](#)

[Home](#)



- [Architecture](#)
- [Automotive](#)
- [General industry](#)
- [ACE Off Road](#)
- [Electrical & Lighting](#)
- [Appliances](#)
- [Furniture](#)
- [Glass & Ceramic](#)
- [Anticorrosion](#)
- [Functional](#)
- [Specialities](#)

Furniture

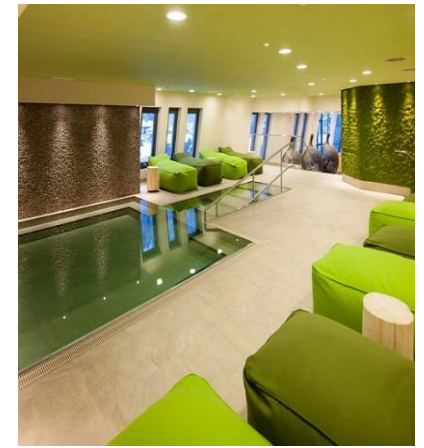
RIPOL offers a selection of powder coatings systems for exterior and interior applications. The product range includes high-gloss, semi-gloss and matt coatings with various textures such as coarse structured, fine textured, hammered finishes, marble-like coatings, metallic, etc. New versions are constantly being developed to ensure a maximum of design freedom in the furniture segment. The products designed for this industry show outstanding mechanical properties and excellent edge coverage in order to reduce the danger of corrosion.

- Office & School Furniture
- Kitchen & Bathroom Furniture
- Garden Furniture
- Urban and public Furniture

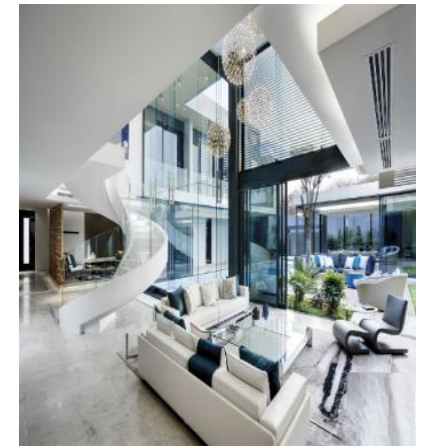
RIPOL can develop tailor-made powder coating finishes formulated with an outgassing forgiving agent in order to coat cast parts and hot galvanized steel , which according to the surface characteristics tend to outgas during the curing process.



Office Furniture



home furnishings





[Applications/Markets](#)

[Products](#)

[Services](#)

[Certifications](#)

[About us](#)

[Home](#)



Glass & Ceramics

RIPOL has expanded its application from ferrous and non-ferrous substrate to non-metal substrate.

RIPOL Vitrum Series is designed to coat different glass materials. This powder-coated glass can be used for bathroom, kitchen, bedroom and office structures.

RIPOL Ceramic Series is designed to coat different pottery/ceramic materials. It is now used as alternative finish for :

Tested to be more consistent than wet paint and more flexible than pre-colored and tinted glasses, customers can freely choose from a variety of colors and finishes available.

- beverage bottles
- candleholders
- various glass decors
- white board

- roof tiles
- flowers pots
- home decorative ceramics
- garden ceramic decors

- [Architecture](#)
- [Automotive](#)
- [General industry](#)
- [ACE Off Road](#)
- [Electrical &](#)
- [Lighting](#)
- [Appliances](#)
- [Furniture](#)
- [Glass & Ceramic](#)
- [Anticorrosion](#)
- [Functional](#)
- [Specialities](#)

Vitrum

ceramic





[Applications/Markets](#)

[Products](#)

[Services](#)

[Certifications](#)

[About us](#)

[Home](#)



- [Architecture](#)
- [Automotive](#)
- [General industry](#)
- [ACE Off Road](#)
- [Electrical & Lighting](#)
- [Appliances](#)
- [Furniture](#)
- [Glass & Ceramic](#)
- [Anticorrosion](#)
- [Functional Specialities](#)

Anticorrosion

Corrosion of steel leads to significant high maintenance costs. Adequate surface pretreatment and the use of the most appropriate anticorrosion system on the substrate to be coated will extend the life of the painted structure. RIPOL offers a range of products to provide superior Anticorrosion Solutions for every substrate to be coated.

Single-coat system for galvanized steel

High performance durable Polyester-based single-coat system optimized for this substrate.

Double-coat systems for steel structures to be exposed outside

These systems combine an efficient chemical or mechanical pretreatment of the substrate, a suitable powder primer and a Polyester-based powder coating finish in order to achieve a higher level of corrosion protection.

RIPOL uses internationally recognized testing methods to ensure the powder coatings comply with standards for weather-resistance and mechanical properties.

- Zinc Rich
- Zinc-free
- Universal Filler
- Shop Primer
- Primer GS for galvanized structures
- Primer ALU for aluminum surfaces

[SEE MORE](#)

ZINC
RICH

ZINC
FREE





[Applications/Markets](#)

[Products](#)

[Services](#)

[Certifications](#)

[About us](#)

[Home](#)



- [Architecture](#)
- [Automotive](#)
- [General industry](#)
- [ACE Off Road](#)
- [Electrical & Lighting](#)
- [Appliances](#)
- [Furniture](#)
- [Glass & Ceramic](#)
- [Anticorrosion](#)
- [Functional Specialities](#)



Functional Powder Coatings

RIPOL provides powder coating systems specifically developed to meet specific functional requirements in specific environments such as:

- Gas tanks
- Reservoirs
- Valves and Fittings
- Tubes
- REBAR
- Pipelines

The highest standards are required for anticorrosion protection and chemical aggression.

Series 2 FBE - Fusion Bonded Epoxy systems

fusion bonded epoxy thermosetting coatings specially developed to protect underground pipelines. Series 2FBE is also an ideal corrosion protection coating on REBAR used to strengthen concrete as well as on valves and fittings, storage tanks and electrical insulation.

Series 2 EPX Xtra Wall - Epoxy High Thickness Primer

Special epoxy based powder coatings that are widely used to protect concrete reinforcing bars (REBAR) and steel reservoirs from corrosion. Series 2 EXP Xtra Wall are applied onto preheated steel components to ensure optimal adhesion and outstanding cathodic disbonding resistance. Exceptionally tough high build film with thickness > 600 μ on pre-heated surfaces. No drips, no runs. Excellent corrosion resistance.



FBE
Fusion Bonded





[Applications/Markets](#)

[Products](#)

[Services](#)

[Certifications](#)

[About us](#)

[Home](#)



SPECIALTIES



Energy efficient

ESD

Conductive/ ESD



Out-gassing



Anti Bacterial



Scratch resistance



Thin-film coatings



[Applications/Markets](#)

[Products](#)

[Services](#)

[Certifications](#)

[About us](#)

[Home](#)



Energy-efficient coatings

RIPOL BT Series - Low Temperature Curing powder coating for Industrial applications

RIPOL BT includes a range of products specifically engineered to meet demands of today's Original Equipment Manufacturer (OEM) market for a powder coating that cures faster and/or at low temperatures, driving an increase in productivity, a reduction in energy costs and the ability to coat more heat sensitive objects.

They are easy to use and offer a good quality finish, providing excellent coverage. RIPOL BT includes products which can cure at temperatures as low as 140°C/20min, 150°C/15min, or 160°C/10min.

Specialties

Energy-efficient

Anti Bacterial

Out-gassing

Thin-film coatings

Conductive/ ESD

Scratch resistance

- Lower temperature, higher energy savings
- Better productivity, lower production cost
- Taking on heat sensitive materials



ENERGY EFFICIENCY

Lowering Operating Cost





[Applications/Markets](#)

[Products](#)

[Services](#)

[Certifications](#)

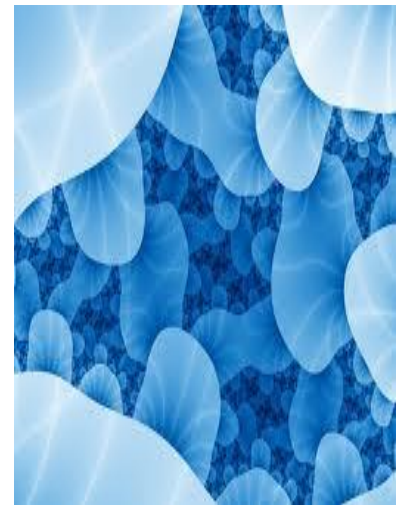
[About us](#)

[Home](#)



Antimicrobial powder coatings - Series BACTERI Ag

RIPOL Bacteri Ag antimicrobial powder coatings are used to provide protection against the growth of microorganisms in a wide range of applications. They incorporate environmentally sustainable antimicrobial additives capable to release silver ions by way of an ion exchange mechanism. Silver is known to be a safe material for human contact and highly effective to inhibit the growth of a broad spectrum of micro-organisms and has many benefits over alcohol-, chlorine-, or ammonium-based antimicrobials. Sustained effectiveness of these additives has been certified by an independent, approved testing institute. Antimicrobial coatings possess temperature stability and excellent color retention. They are also durable and capable of providing maximum protection over an extended period of time. RIPOL Bacteri Ag antimicrobial powder coatings are available in all resin chemistries.



Specialties

- Energy-efficient
- Anti Bacterial
- Out-gassing
- Thin-film coatings
- Conductive/ ESD
- Scratch resistance



Bacteri 

Antibacterial 
Test Report JAPANESE INDUSTRIAL STANDARD



[Applications/Markets](#)

[Products](#)

[Services](#)

[Certifications](#)

[About us](#)

[Home](#)



Specialties

- Energy-efficient**
- Anti Bacterial**
- Out-gassing**
- Thin-film coatings**
- Conductive/ ESD**
- Scratch resistance**

Outgassing Friendly – Low Cure

Fisheyes, bubbles, and small holes are caused by outgassing: the release of gasses from the zinc-coated metal as the part is baked in the powder coating process.

RIPOL offers you products which permit outgassing from the porous zinc surface before cross-linking and thus lead to a smoother surface. The formula provides for longer cure times and lower temperatures, allowing the gas to penetrate the coating while it is still in a gel form. This results in a reduction in the number of fisheyes in the cured powder coating.

Tempering of the coating components is recommended in the case of extreme applications.

Tempering involves heating of metal components prior to coating in order to release gases. The selected temperature level should be above the actual curing temperature of the powder coating.

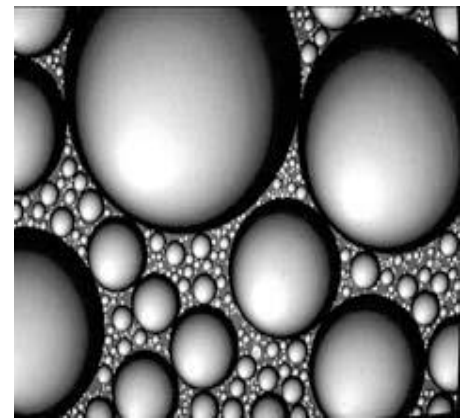


Properties

- Outgassing inhibitive product design
- Low cure

Typical applications

- Hot-dip galvanized workpieces
- Cast parts
- Base steel alloys





Specialties

Energy-efficient

Anti Bacterial

Out-gassing

Thin-film coatings

Conductive/ ESD

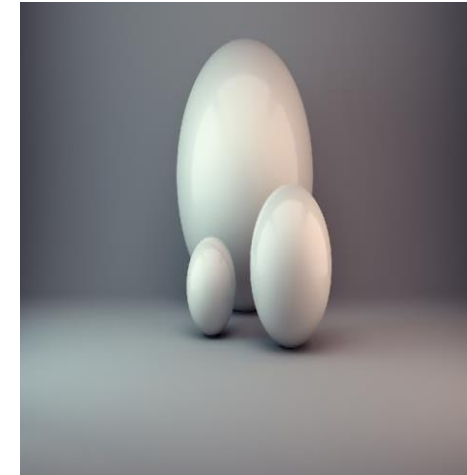
Scratch resistance

Series GC

Controlled & Selected Particle Size Distribution PSD

The quality of powder coatings is influenced by many factors. One of the most important is particle size distribution (PSD). High product quality requires a narrow particle size distribution with a sharp and well-defined top cut and a low amount of fine particles.

RIPOL Series GC includes a range of powder coatings where the most advanced formulation and manufacturing technologies are combined. These products are manufactured with a special process which enables to control and select Particle Size Distribution in order to offer better and consistent appearance and color standards with optimal operational efficiency in terms of uniform powder utilization over a broad range of traditional application thicknesses.





[Applications/Markets](#)

[Products](#)

[Services](#)

[Certifications](#)

[About us](#)

[Home](#)



Specialties

- Energy-efficient**
- Anti Bacterial**
- Out-gassing**
- Thin-film coatings**
- Conductive/ ESD**
- Scratch resistance**

Conductive/ ESD powder coatings with discharging properties

RIPOL ESD Series includes a range of powder coatings specifically designed to meet requirements where sensitive electronic equipment must be protected from ESD (Electrostatic Discharge) due to static build-up. The coating acts as a protective film that dissipates static charge occurring onto the surface. With RIPOL ESD coatings valuable electronic components are kept safe in use or in storage. RIPOL ESD coatings in this area of application have a surface electrical resistance of $10^5 - 10^9 \Omega$ at a film thickness of 70 – 90 μm (increasing the film thickness will improve the electrical resistance accordingly). RIPOL ESD powder coatings are suitable for applications such as electronic enclosures, computer work stations, work benches and work surfaces, shelving, storage organizers, and more. RIPOL ESD powder coatings are ideal to coat components which have to comply with the ATEX Regulations.

ESD

**Series
Electrostatic
Discharge**



ESD Protective



19LN1F95220
BLACK Conductive/ ESD powder coatings

Conductive material	Semi-conductive material	Dissipative material	Anti-static material	Insulating material
$10^{-1} \Omega$	$10^5 \Omega$	$10^9 \Omega$	$10^{12} \Omega$	$>10^{12} \Omega$

[Applications/Markets](#)[Products](#)[Services](#)[Certifications](#)[About us](#)[Home](#)

Specialties

Energy-efficient

Anti Bacterial

Out-gassing

Thin-film coatings

Conductive/ ESD

Scratch resistance

Series AG

Powder Coatings with Scratch Resistance properties

RIPOL Series AG includes a range of powder coatings specifically designed to deliver added value in terms of durable, scratch resistance - e.g. less prone to drag-marks, reduced dirt- and handling-related scratch, etc.

With a RIPOL AG formulation, the scratch resistance can be improved significantly over that of a conventional hybrid-EP - based powder coating, and with no additional wear-and-tear on the powder application equipment

Abrasion resistance is the durability of a coating at profound abrasive stress such as laminar forces. Abrasion resistance is different to scratch resistance which is a single point pressure impact combined with a movement. Typically scratches are caused by tips of a hard material, e.g. a needle or other sharp edged objects. Scratch resistant powder coatings are not necessarily equally good in terms of abrasion resistance.





[Applications/Markets](#)

[Products](#)

[Services](#)

[Certifications](#)

[About us](#)

[Home](#)



family

**Our
products**

Finishes



in stock



[Applications/Markets](#)

[Products](#)

[Services](#)

[Certifications](#)

[About us](#)

[Home](#)



family

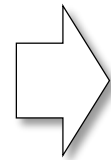
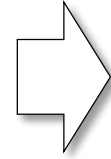
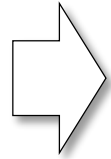


Series 5 PEA
Polyester Facade

Series 6 PEI
Polyester Industrial

Series 1 HEP
Hybrid epoxy
polyester

Series 2 EPX
Epoxy & Epoxy
modified



Fassaden
Decorative Finishes

Outdoor
Decorative Finishes

Indoor
Decorative Finishes

Our
products



[Applications/Markets](#)

[Products](#)

[Services](#)

[Certifications](#)

[About us](#)

[Home](#)



**Series 5 PEA
Polyester
Facade**

PEA Architectural & Durable Polyester Systems											
Series	Finish	Gloss		Approvals/Certifications			Weather. Category	Market/Applications			
				GSB Master	GSB Standard	Qualicoat Class 1		Fassaden	SBCR	ACE	PF
59L	SMO	GLO	80 ±5	●			2	●		●	
59L/S0	SMO	SGL	70 ±5	●			2	●		●	
5 PF	SMO	TM	TM		●	●	1				●
58L	SMO	GLO	80 ±5		●	●	1	●			
58/S0	SMO	SGL	70 ±5		●	●	1	●			
56L	SMO	SGL	60 ±5			●	1	●			
55R	FTX	SDM	SDM			●	1	●	●		
52L	SMO	MAT	25 ±5		●	●	1	●	●		

Our products





[Applications/Markets](#)

[Products](#)

[Services](#)

[Certifications](#)

[About us](#)

[Home](#)



**Series 6 PEI
Polyester
Industrial**

PEI	Industrial Polyester Systems - not for Fassaden		
Series	Finish	Glossiness Range	
69L/T0	SMO	HGL	>85
69L	SMO	GLO	85-75
69B	GBS	SGL	SGL
68L..67L	SMO	SGL	80-70
66L..65L	SMO	SGL	60-50
66R..65R	FTX	SGL	SGL
64L..63L	SMO	SDM	40-30
64R	FTX	SDM	SDM
62L	SMO	MAT	30-20
61L	SMO	DMAT	20-10



**Our
products**

- | | | | |
|-----|---------------------|------|-------------|
| SMO | Smooth | HGL | Super Gloss |
| GBS | Structured/Bucciato | GLO | Glossy |
| FTX | Fine Textured | SGL | Semigloss |
| NTK | Antik Effects | SDM | Semi-matt |
| MRB | Marble Effects | MAT | Matt |
| MAR | Hammered/Martelé | DMAT | Deep Matt |





[Applications/Markets](#)

[Products](#)

[Services](#)

[Certifications](#)

[About us](#)

[Home](#)



**Series 1 HEP
Hybrid EP**

Industrial Hybrid EP Systems -Indoor			
HEP			
Series	Finish	Glossiness Range	
19L	SMO	GL	>80
19B	GBS	SGL	SGL
18L/17L	SMO	SGL	80-70
16L/15L	SMO	SGL	60-50
16B	GBS	SDM	SDM
16R	FTX	SGL	SGL
14L	SMO	SDM	45-35
14R	FTX	SDM	SDM
14B/12B	GBS	MAT	MAT
13L/12L	SMO	MAT	30-20
11L	SMO	DMAT	20-10



**Our
products**

SMO	Smooth	GLO	Glossy
GBS	Structured/Bucciato	SGL	Semigloss
FTX	Fine Textured	SDM	Semi-matt
NTK	Antik Effects	MAT	Matt
MRB	Marble Effects	DMAT	Deep Matt
MAR	Hammered/Martelé		



[Applications/Markets](#)

[Products](#)

[Services](#)

[Certifications](#)

[About us](#)

[Home](#)



Series 2 EPX
Epoxy & Epoxy modified systems

EPX - Epoxy Systems - Indoor			
Series	Finish	Glossiness Range	
29L	SMO	GL	>80
29B	GBS	SGL	SGL
28L/27L	SMO	SGL	80-70
26L/25L	SMO	SGL	60-50
26R	FTX	SGL	SGL
24R	FTX	SDM	SDM
22L	SMO	MAT	30-20
21L	SMO	DMAT	20-10



Our products

SMO Smooth
 GBS Structured/Bucciato
 FTX Fine Textured

GLO Glossy
 SGL Semigloss
 SDM Semi-matt
 MAT Matt
 DMAT Deep Matt





[Applications/Markets](#)

[Products](#)

[Services](#)

[Certifications](#)

[About us](#)

[Home](#)



SUR	PRE	PROT	PRIMER	COL	Curing	Thick μ	FINISH (*)	Thick μ	Corrosion Category					
									C1	C2	C3	C4	C5-I	C5-M
STE	C/M	BAR	22LG1B00220	7004	20-25' @ 180° 10-12' @ 190°	60-80	SERIE 5/6	80-90	Green	Green	Blue	White	White	White
STE	C/M	REB	28LG1D69090	7044	20' @ 160° 15' @ 170°	80-100	SERIE 5/6	80-90	Green	Green	Green	Blue	White	White
STE	C/M	CAT	28LG1C29090	7000	20' @ 160° 15' @ 170°	60-80	SERIE 5/6	80-90	Green	Green	Green	Green	Blue	White
GS	C/M	BAR	23LG1704730	7047	40-45' @ 170	60-80	SERIE 5/6	80-90	Green	Green	Green	Blue	Yellow	White
GS	C/M	BAR	16LG1D02430	7040	20-25' @ 180	60-80	SERIE 5/6	80-90	Green	Green	Green	Blue	White	White
ALU	C	BAR	12LG1F26812	7040	10-15' @ 180	60-80	SERIE 5/6	80-90	Green	Green	Green	Blue	White	White

● High durability (≥15 years)
 ● Medium durability (5 to 15 years)
 ● Limited durability (2 to 5 years)

SUR = Surface : STE - Steel - GS - Galvanized steel
 PRE = Surface Treatment:
 C - Chemical: Crystalline Zn-Ni Phosphating and passivation / comparable phosphate-free surface treatment processes
 M - Mechanical : Sanblasting Ra 6-12μ ; Sa ≥ 2,5
 PROT = Protection: BAR(Barrier Protection); REBAR - Reinforced Barrier Protection ; CAT - Cathodic Protection
 Curing TDS - see Technical Data Sheet

RIPOL Systems:
 PRIMER FONDO B002 - EPX 22LG1B00220
 PRIMER ZINC-FREE D690 - EPX 28LG1D69090
 PRIMER ZINC RICH C290 - EPX 28LG1C29090
 PRIMER EPX-GS - EPX 23LG1704730 Zinc-free for Galvanized steel
 PRIMER GS D024- HEP 16LG1D02430 Zinc-free for Galvanized steel
 PRIMER ALU F268- HEP 12LG1F26812 Zinc-free for Aluminum

SERIE 5 PEA- Facade Polyester - Qualicoat and GSB Certified
 To improve gloss retention use PEA SERIE 59 HWF GSB Master Class
 SERIE 6 PEI - Industrial Polyester



**Decorative
Metallic &
Special Effect
Finishes**



**Our
products**

**clear
Coat**

Clear Coat and Clear Coat Metallic

RIPOL Clear Coat includes a range of both transparent and colored transparent coatings available in glossy, matt, and satin finishes.

RIPOL Clear Coat are available in PEI Industrial Polyester, and HEP Hybrid epoxy-polyester version. They improve the aesthetics of the finished piece and add depth to a color. Metallic and pearl effects are available to give an even more spectacular overall effect.

**Excellence
Outdoor Collection**

The **Excellence Collection** covers weather resistant metallic and special effects finishes suitable for exterior applications (Facade industry).



- **Pearl Mica Metallic finishes**
- **Raffaello marble-like finishes**
- **Anodizing effects**
- **Antiques Décor**

**Indoor Collection
Elegance**

The **Elegance Collection** includes metallic and special effects finishes for interior design. Available in a wide variety of colors, shades, effects and textures, RIPOL Special Effects powder coatings create design freedom without compromising strong functional properties.

- **Metallic effects**
- **Antiques Décor**
- **Pietra - stone-like effects**

- **Hammertones**
- **Fine textured metallic**
- **Marble-like effects**



[Applications/Markets](#)

[Products](#)

[Services](#)

[Certifications](#)

[About us](#)

[Home](#)



STRUCTURED
systems

*FEIN*STRUKTUR

Finishes

Antiques

Excellence
Outdoor Collection

Indoor Collection
Elegance

Raffaello MARBLES

Pietra

Hammer**Swing**

Our
products



[Applications/Markets](#)

[Products](#)

[Services](#)

[Certifications](#)

[About us](#)

[Home](#)

RIPOL
the Power of Colour

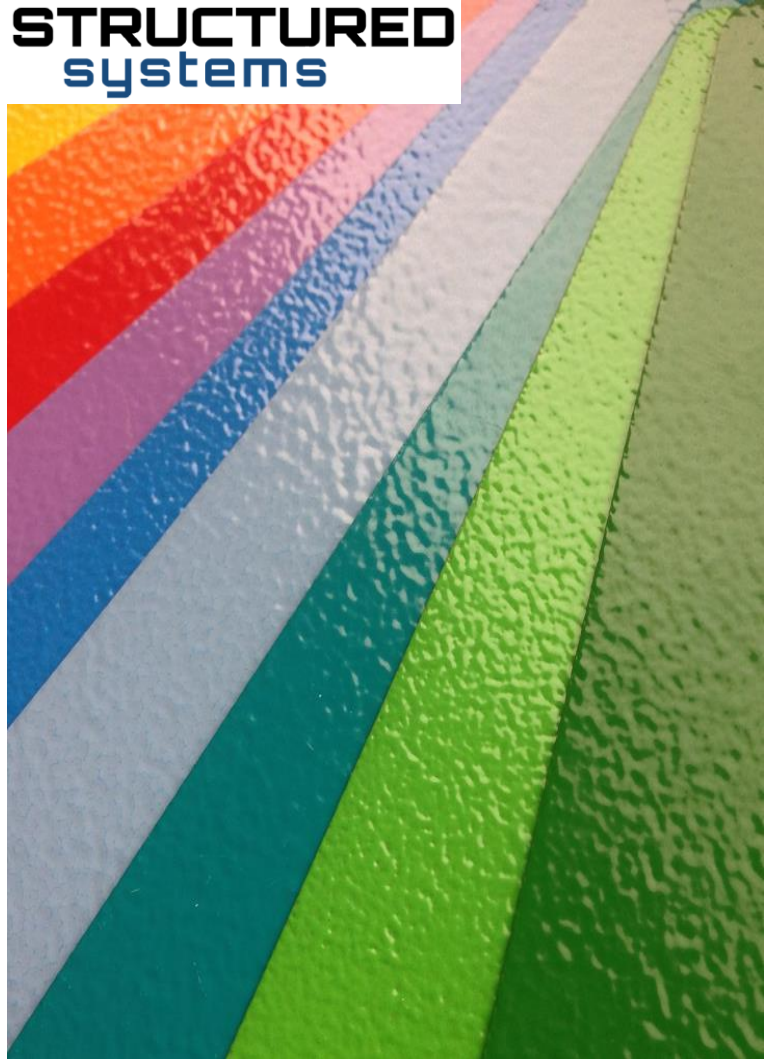
Finishes

Our
products

FEINSTRUKTUR



STRUCTURED
systems





[Applications/Markets](#)

[Products](#)

[Services](#)

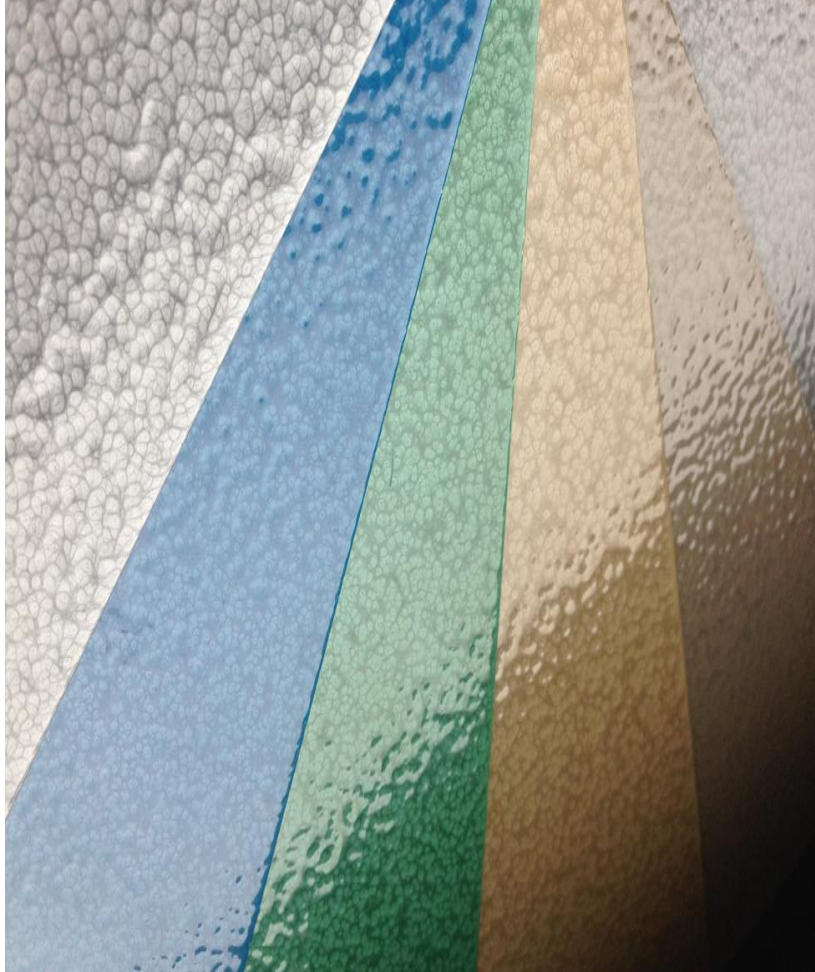
[Certifications](#)

[About us](#)

[Home](#)



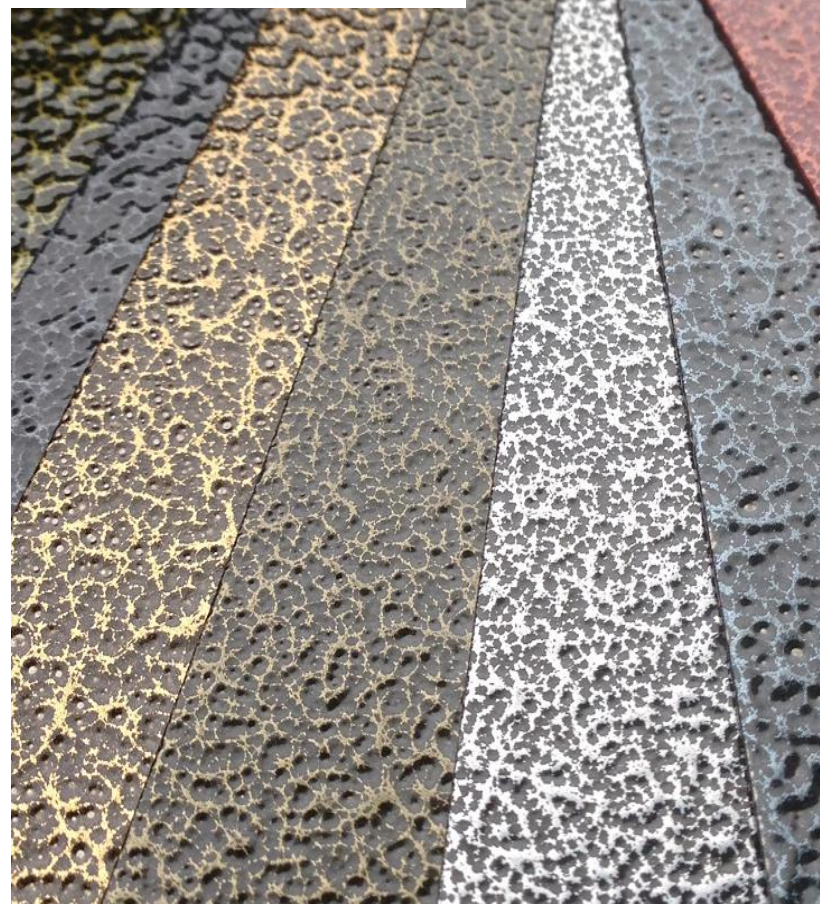
HammerSwing



Finishes

Our products

Antiques





[Applications/Markets](#)

[Products](#)

[Services](#)

[Certifications](#)

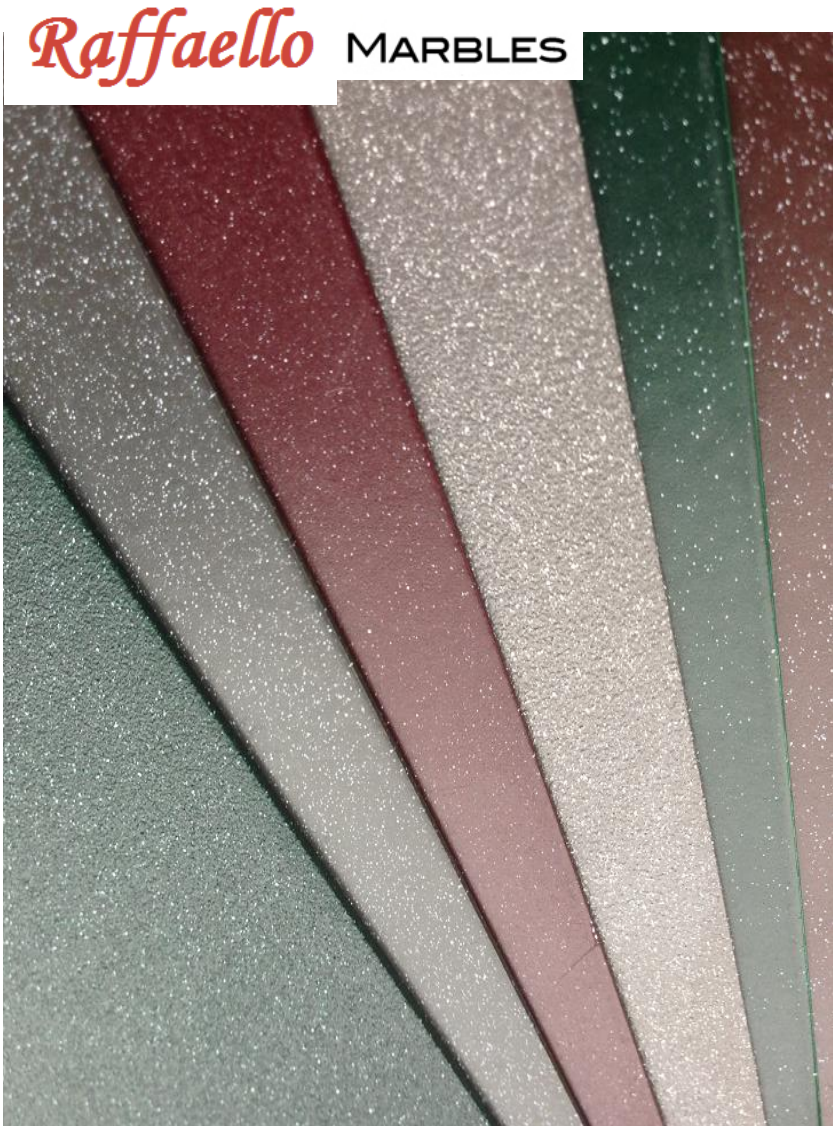
[About us](#)

[Home](#)



Finishes

Our products





[Applications/Markets](#)

[Products](#)

[Services](#)

[Certifications](#)

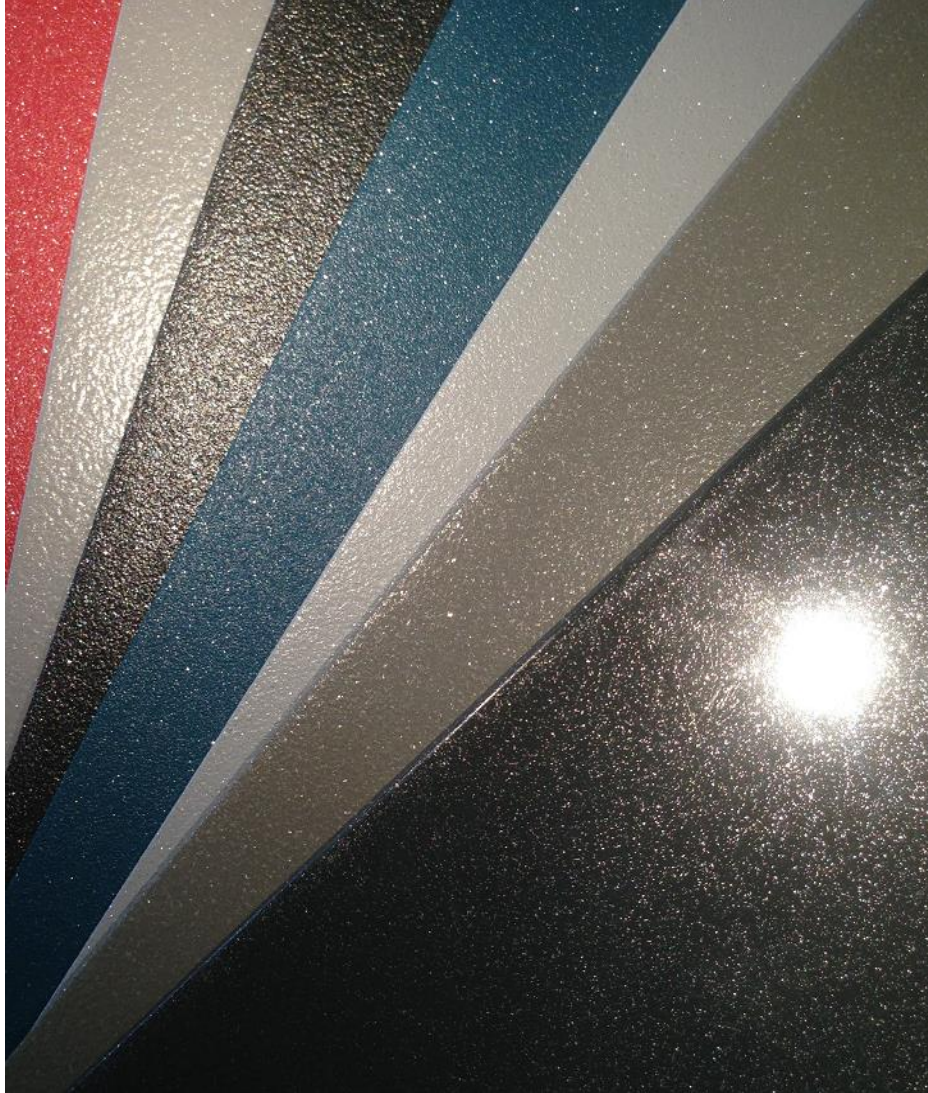
[About us](#)

[Home](#)

RIPOL
the Power of Colour

Finishes

Our
products



Indoor Collection
Elegance

Excellence
Outdoor Collection



[Applications/Markets](#)

[Products](#)

[Services](#)

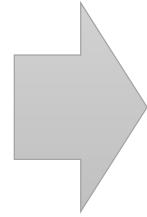
[Certifications](#)

[About us](#)

[Home](#)



SPECIALTIES



HEP Hybrid EP

PEI Industrial PE

EPX Epoxy systems

Antimicrobial Finishes

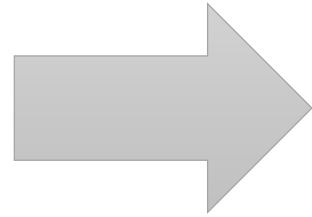


Low Temperature Curing

LC - 160
Low T Curing

FC - 150
Fast T Curing

UC - 140
Ultra Low T Curing



HEP Hybrid EP

PEI Industrial PE

EPX Epoxy systems



HEP Hybrid EP



[Applications/Markets](#)

[Products](#)

[Services](#)

[Certifications](#)

[About us](#)

[Home](#)

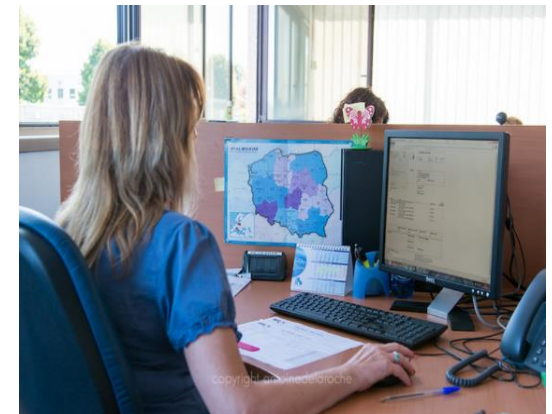


More than 400 products available for immediate delivery. 2000 sqm Logistic Dept. equipped with a bar code scanning system to improve accuracy and ensure Fast and Accurate Loading Service

 **in stock**

400+

Our products





[Applications/Markets](#)

[Products](#)

[Services](#)

[Certifications](#)

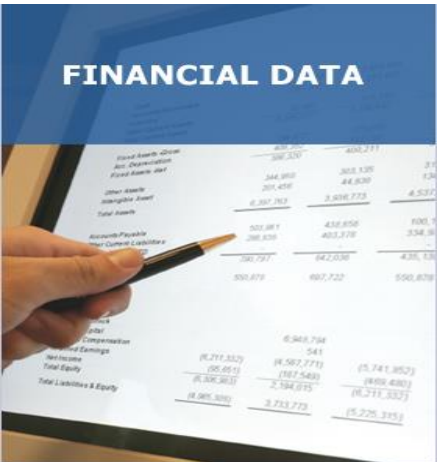
[About us](#)

[Home](#)



RIPOL Group at a glance

Legal Ownership:	Di Segni family
Establishment :	Y2000
Covered area:	10.000 sqm
Manufacturing area:	7.000 sqm
Warehouse:	2000 sqm
Offices and Laboratory:	900 sqm
Uncovered area:	5.000 sqm
Manufacturing locations:	Milan –Italy
Manufacturing capacity:	8.000 ton/y



FINANCIAL DATA

Employees: 55
 Group Turnover: 18 mio € apx (Y2015)
 Domestic Sales: 50 %
 International Sales: 50 %
 International subsidiaries: 5
 International Dealers : EU & Overseas



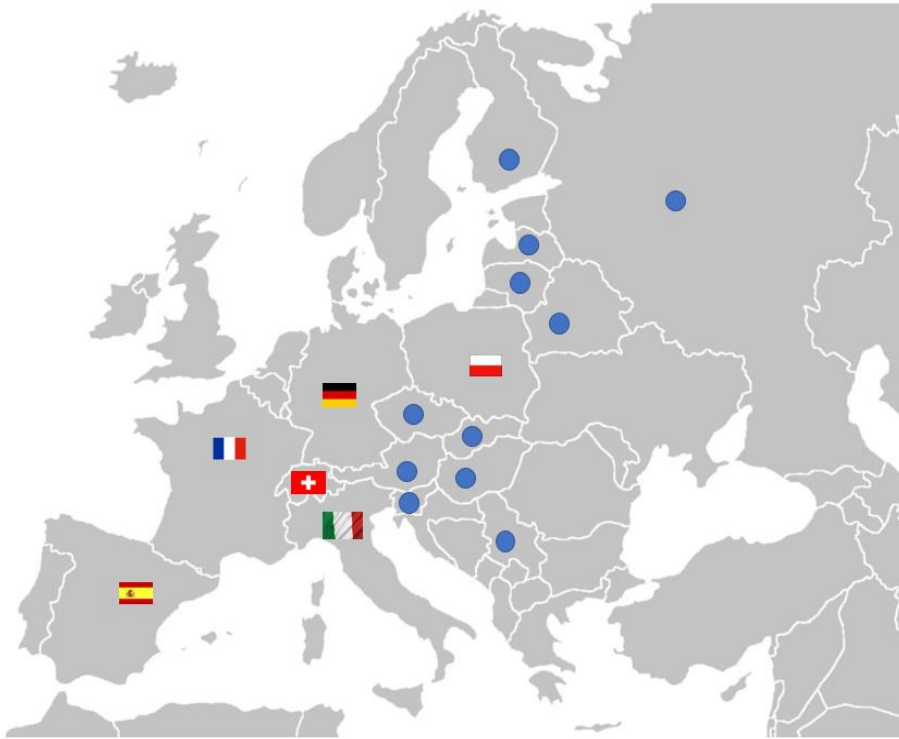
MILESTONES & ACHIEVEMENTS

HOW WE WORK



An International Attitude

RIPOL has a vocation towards internationalization built into its own DNA. Since its creation RIPOL has set itself the goal of becoming a reference point for excellence in the European Powder Coatings market and has consequently made the necessary investments in terms of human and technological resources in order to reach the target set.



Deutschland
RIPOL GmbH
Bauhofring 2/1 71732 Tamm
info-DE@ripol.com



Switzerland
RIPOL Sagl
CH-6906 Lugano
info-CH@ripol.com



Poland
FARBY PROSKOWE Sp. Z o.o.
Iłżecka 26 -02-135 Warszawa, Polska
info-PL@ripol.com



Spain & Portugal
RECUBRIMIENTOS TERMOENDURECIBLES
RIPOL SLU
E- 08820 El Prat de Llobregat - Barcelona
info-ES@ripol.com



France
RIPOL EURL
Paris - France
info-FR@ripol.com





[Applications/Markets](#)

[Products](#)

[Services](#)

[Certifications](#)

[About us](#)

[Home](#)



15 min de Milano Malpensa International Airport
30 min de Milano City Centre –A4 Autoroute Milan-Turin – exit ARLUNO
10 min de Milano **EXPO Village** / RHO-Fiera Metro Ligne MM 1 -RED

Plant & Headquarters

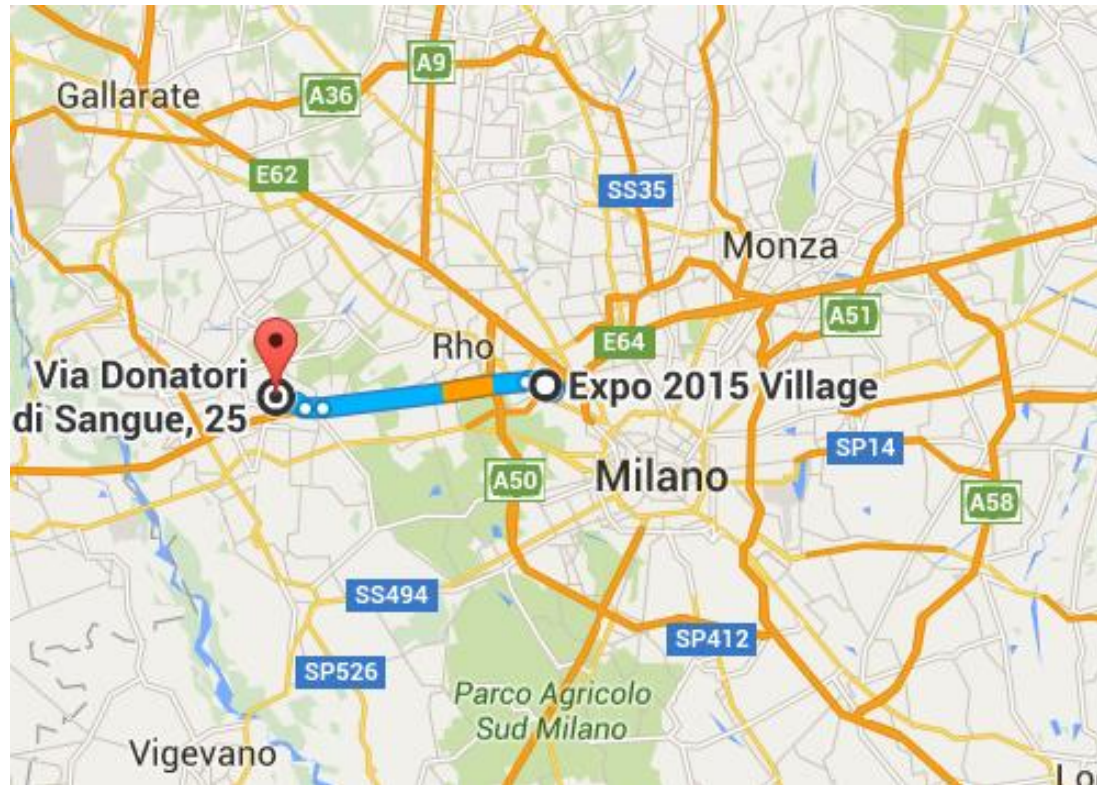
Operational HQS :

Via Donatori del Sangue, 25/A
I-20010 S. Stefano Ticino -Milan
GPS : 45°29'04.5"N 8°54'31.4"E
Ph +39029748411
Fax +390297484170

international@ripol.com
www.ripol.com

Legal HQS

Foro Buonaparte 67
20121 Milan





[Applications/Markets](#)

[Products](#)

[Services](#)

[Certifications](#)

[About us](#)

[Home](#)



Celebrating

15
YEARS
2000-2015

- 2000** Establishment of RIPOL SpA
- 2001** Sales start-up - Italian mkt
- 2003** RIPOL starts expanding in international markets
 - Company obtains ISO 9001 - QUALICOAT and GSB Certifications
 - Installation of a new extrusion line
- 2005** Investments in Mfg area - new equipment for metallic powders
 - Strategic cooperation agreement in Russian Federation
- 2006** New investment in the ERP system
 - New investment in Human Resources
 - Continues domestic and int. Sales expansion
- 2007** Installation of a new extrusion line in the Mfg area
- 2008** Implementation of Stock assortment
 - Architectural Matt and Semi gloss products
 - Company obtain GSB Master Certification



- 2009** Establishment of RIPOL Deutschland
- 2010** Establishment of RIPOL Switzerland
- 2011** Group Record Sales
 - Significant sales expansion in International mkts
 - Establishment of RIPOL Espana
- 2012** Establishment of RIPOL Poland
 - Establishment of RIPOL France
- 2014** Replacement of enterprise-resource planning (ERP) system
- 2015** Celebrating the 15° Anniversary
 - Installation of a New Manufacturing Line



[Applications/Markets](#)

[Products](#)

[Services](#)

[Certifications](#)

[About us](#)

[Home](#)



Licenses & Certifications





DNV BUSINESS ASSURANCE MANAGEMENT SYSTEM CERTIFICATE

Certificato No. / Certificate No. **CERT-12107-2003-AQ-MIL-SINCERT**

Si attesta che / This is to certify that

RIPOL S.p.A.

Via Donatori del Sangue, 25/a - 20010 Santo Stefano Ticino (MI) - Italy
(Riferimento al Supplemento "A" / Refer to Supplement "A")

è conforme ai requisiti della norma per i sistemi di gestione;
has been found to conform to the management system standard:

UNI EN ISO 9001:2008 (ISO 9001:2008)

Questa Certificazione è valida per il seguente campo applicativo:
This Certificate is valid for the following product or service ranges:

**Progettazione, ricerca e sviluppo, produzione e commercializzazione di rivestimenti in polvere termoindurenti
(Settore EA : 12)**

*Design, research and development, production and sale of thermosetting powder coatings
(Sector EA : 12)*

Data Prima Emissione/Initial Certification Date:
2003-04-03

Il Certificato è valido fino al:
This Certificate is valid until:
2015-03-04

L'audit è stato eseguito sotto la supervisione di/
The audit has been performed under the supervision of

Luisa Colombo
Lead Auditor

La validità del presente Certificato è subordinata al rispetto delle condizioni contenute nel Contratto di Certificazione.
Lack of fulfillment of conditions as set out in the Certification Agreement may render this Certificate invalid.

DET NORGE VERIFIKASJONSHIL - CENTRO DEDICAZIONE CALLEDI - PALAZZO 5801 - V.le Cologna, 9 - 20044 Agrate Brianza (MB) - ITALY - TEL. 039209900 - WWW.DNV.COM/IT

Luogo e Data/Place and Date:
Agrate Brianza (MB), 2014-03-10

Per l'Organismo di Certificazione:
For the Certification Body:



ISO 9001 A
ISO 9001 B
ISO 9001 C
ISO 9001 D
ISO 9001 E
ISO 9001 F
ISO 9001 G

Numero di RLA 04 per gli settori di accreditamento ISO
04A, 04B, 04C, 04D, 04E, 04F, 04G, 04H, 04I, 04J, 04K, 04L, 04M, 04N, 04O, 04P, 04Q, 04R, 04S, 04T, 04U, 04V, 04W, 04X, 04Y, 04Z
e ISO 14001 per gli settori di accreditamento LAR

Zeno Beltrami
Management Representative



DNV BUSINESS ASSURANCE MANAGEMENT SYSTEM CERTIFICATE

Supplemento "A" / Supplement "A" to Certificate No. **CERT-12107-2003-AQ-MIL-SINCERT**

Le sedi e i servizi erogati da R. Sociale inclusi nella Certificazione sono i seguenti:
The units and services supplied by R. Sociale included in the Certification are the following:

Bauhfring 2/1 - D-71732 Tamm - Germania
Via Carlo Cattaneo 21 - 6906 Lugano (CH) - Svizzera
Avda. Les Gurrigues, 46 - E-08820 El Frui de Liobregui - Spugna

Commercializzazione di rivestimenti in polvere termoindurenti
Sale of thermosetting powder coatings

Data Prima Emissione/Initial Certification Date:

2003-04-03

Il Certificato è valido fino al:
This Certificate is valid until:
2015-03-04

L'audit è stato eseguito sotto la supervisione di/
The audit has been performed under the supervision of

Luisa Colombo
Lead Auditor

La validità del presente Certificato è subordinata al rispetto delle condizioni contenute nel Contratto di Certificazione.
Lack of fulfillment of conditions as set out in the Certification Agreement may render this Certificate invalid.

DET NORGE VERIFIKASJONSHIL - CENTRO DEDICAZIONE CALLEDI - PALAZZO 5801 - V.le Cologna, 9 - 20044 Agrate Brianza (MB) - ITALY - TEL. 039209900 - WWW.DNV.COM/IT

Luogo e Data/Place and Date:

Agrate Brianza (MB), 2014-03-10

Per l'Organismo di Certificazione:
For the Certification Body:



ISO 9001 A
ISO 9001 B
ISO 9001 C
ISO 9001 D
ISO 9001 E
ISO 9001 F
ISO 9001 G

Numero di RLA 04 per gli settori di accreditamento ISO
04A, 04B, 04C, 04D, 04E, 04F, 04G, 04H, 04I, 04J, 04K, 04L, 04M, 04N, 04O, 04P, 04Q, 04R, 04S, 04T, 04U, 04V, 04W, 04X, 04Y, 04Z
e ISO 14001 per gli settori di accreditamento LAR

Zeno Beltrami
Management Representative



<p>VORLÄUFIGE Material Zulassung</p> <p>Die GSB INTERNATIONAL verleiht nach positiver Prüfung des Beschichtungsmaterials Serie 52 L der Firma</p> <p>RIPOL S.r.l. Via Donatori del Sangue 25 / A 20010 S. STEFANO TICINO (MI) ITALY</p> <p>unter der Zulassungsnummer 157 c das Recht, dieses Beschichtungsmaterial wie nebenstehend zu kennzeichnen und damit alle Unternehmen, die Inhaber des Qualitätssegels für die Stückbeschichtung von Bauteilen aus Aluminium sind, zu beliefern. Die Zulassung setzt voraus, dass die GSB Qualitätsrichtlinien AL 631 erfüllt werden.</p> <p>Gültig bis: 31.07.2019 Überwachung: jährlich</p> <p>GSB INTERNATIONAL e. V., Am Bonnehof 5, D-40474 Düsseldorf June 15th, 2015</p>	<p>PRELIMINARY Material Licence</p> <p>The GSB INTERNATIONAL awards after a positive approval test of the coating material Serie 52 L to the company</p> <p>RIPOL S.r.l. Via Donatori del Sangue 25 / A 20010 S. STEFANO TICINO (MI) ITALY</p> <p>with the licence number 157 c the right to label the coating material as shown left. This includes the right to supply all users of the quality label for the piecework coating of aluminium building components with the material approved through this licence. The major prerequisite for doing so is the fulfillment of the GSB Quality Regulations AL 631.</p> <p>Valid till: 2019/07/31 Monitoring: yearly</p> <p>GSB INTERNATIONAL e. V., Am Bonnehof 5, D-40474 Düsseldorf October 20th, 2015</p>
---------------------------------------------------------------------------------------------------------------------------------------------------------------------------------------------------------------------------------------------------------------------------------------------------------------------------------------------------------------------------------------------------------------------------------------------------------------------------------------------------------------------------------------------------------------------------------------------------------------------------------------------------------------------------------------------------------------------------------------------------------------------------------------	-------------------------------------------------------------------------------------------------------------------------------------------------------------------------------------------------------------------------------------------------------------------------------------------------------------------------------------------------------------------------------------------------------------------------------------------------------------------------------------------------------------------------------------------------------------------------------------------------------------------------------------------------------------------------------------------------------------------------------------------------------------------------------------------------------------------------

Vorsitzender des Vorstandes
Chairman of the Board

Vorsitzender des Güteausschusses Aluminium
Chairman of the Quality Committee Aluminium

<p>VORLÄUFIGE Material Zulassung</p> <p>Die GSB INTERNATIONAL verleiht nach positiver Prüfung des Beschichtungsmaterials Serie 58 L - NEW der Firma</p> <p>RIPOL S.r.l. Via Donatori del Sangue 25 / A 20010 S. STEFANO TICINO (MI) ITALY</p> <p>unter der Zulassungsnummer 157 d das Recht, dieses Beschichtungsmaterial wie nebenstehend zu kennzeichnen und damit alle Unternehmen, die Inhaber des Qualitätssegels für die Stückbeschichtung von Bauteilen aus Aluminium sind, zu beliefern. Die Zulassung setzt voraus, dass die GSB Qualitätsrichtlinien AL 631 erfüllt werden.</p> <p>Gültig bis: 31.07.2019 Überwachung: jährlich</p> <p>GSB INTERNATIONAL e. V., Am Bonnehof 5, D-40474 Düsseldorf October 20th, 2015</p>	<p>PRELIMINARY Material Licence</p> <p>The GSB INTERNATIONAL awards after a positive approval test of the coating material Serie 58 L - NEW to the company</p> <p>RIPOL S.r.l. Via Donatori del Sangue 25 / A 20010 S. STEFANO TICINO (MI) ITALY</p> <p>with the licence number 157 d the right to label the coating material as shown left. This includes the right to supply all users of the quality label for the piecework coating of aluminium building components with the material approved through this licence. The major prerequisite for doing so is the fulfillment of the GSB Quality Regulations AL 631.</p> <p>Valid till: 2019/07/31 Monitoring: yearly</p> <p>GSB INTERNATIONAL e. V., Am Bonnehof 5, D-40474 Düsseldorf October 20th, 2015</p>
------------------------------------------------------------------------------------------------------------------------------------------------------------------------------------------------------------------------------------------------------------------------------------------------------------------------------------------------------------------------------------------------------------------------------------------------------------------------------------------------------------------------------------------------------------------------------------------------------------------------------------------------------------------------------------------------------------------------------------------------------------------------------------------------	-------------------------------------------------------------------------------------------------------------------------------------------------------------------------------------------------------------------------------------------------------------------------------------------------------------------------------------------------------------------------------------------------------------------------------------------------------------------------------------------------------------------------------------------------------------------------------------------------------------------------------------------------------------------------------------------------------------------------------------------------------------------------------------------------------------------------------

Vorsitzender des Vorstandes
Chairman of the Board

Vorsitzender des Güteausschusses Aluminium
Chairman of the Quality Committee Aluminium

<p>VORLÄUFIGE Material Zulassung</p> <p>Die GSB INTERNATIONAL verleiht nach positiver Prüfung des Beschichtungsmaterials Serie 66 L, Lic. Master der Firma</p> <p>RIPOL S.r.l. Via Donatori del Sangue 25 / A 20010 S. STEFANO TICINO (MI) ITALY</p> <p>unter der Zulassungsnummer 157 b das Recht, dieses Beschichtungsmaterial wie nebenstehend zu kennzeichnen und damit alle Unternehmen, die Inhaber des Qualitätssegels für die Stückbeschichtung von Bauteilen aus Aluminium sind, zu beliefern. Die Zulassung setzt voraus, dass die GSB Qualitätsrichtlinien AL 631 erfüllt werden.</p> <p>Gültig bis: 31.07.2019 Überwachung: jährlich</p> <p>GSB INTERNATIONAL e. V., Am Bonnehof 5, D-40474 Düsseldorf June 15th, 2015</p>	<p>PRELIMINARY Material Licence</p> <p>The GSB INTERNATIONAL awards after a positive approval test of the coating material Serie 66 L, Lic. Master to the company</p> <p>RIPOL S.r.l. Via Donatori del Sangue 25 / A 20010 S. STEFANO TICINO (MI) ITALY</p> <p>with the licence number 157 b the right to label the coating material as shown left. This includes the right to supply all users of the quality label for the piecework coating of aluminium building components with the material approved through this licence. The major prerequisite for doing so is the fulfillment of the GSB Quality Regulations AL 631.</p> <p>Valid till: 2019/07/31 Monitoring: yearly</p> <p>GSB INTERNATIONAL e. V., Am Bonnehof 5, D-40474 Düsseldorf June 15th, 2015</p>
----------------------------------------------------------------------------------------------------------------------------------------------------------------------------------------------------------------------------------------------------------------------------------------------------------------------------------------------------------------------------------------------------------------------------------------------------------------------------------------------------------------------------------------------------------------------------------------------------------------------------------------------------------------------------------------------------------------------------------------------------------------------------------------------------	-----------------------------------------------------------------------------------------------------------------------------------------------------------------------------------------------------------------------------------------------------------------------------------------------------------------------------------------------------------------------------------------------------------------------------------------------------------------------------------------------------------------------------------------------------------------------------------------------------------------------------------------------------------------------------------------------------------------------------------------------------------------------------------------------------------------------------------

Vorsitzender des Vorstandes
Chairman of the Board

Vorsitzender des Güteausschusses Aluminium
Chairman of the Quality Committee Aluminium



APPROVAL for coating materials

The Association for Quality Controls in the Lacquering, Painting and Coating Industry, abbreviated to QUALICOAT, hereby grants an approval based on the test results

Report submitted by (Testing laboratory):	QUALITAL
Date of Issue of the Approval:	16.03.2004
Approval valid until:	31.12.2016
System name:	Serie 58L
Valid only for Sublimation:	No
Gloss Category:	2
Class:	1
Structured Finished:	No
Extension for P/P:	No
Metallic colours approved:	No
Banned colours:	3022, 8007
Manufactured by the company:	RIPOL, Milano
Place:	IT - 20123 Milano
P-No:	P-0657

This product may be described and labeled as follows

Product tested and approved for the quality mark



and may therefore be offered to all companies holding the quality label for paint, lacquer and powder coatings on aluminium for architectural applications

Zurich, 17 December 2015

QUALICOAT

M.C. Panam
Mohammed C. Panam
President

Josef Schoppig
Josef Schoppig
General Secretary

QUALICOAT, P.O. Box 1507, CH-8027 Zurich - Todtstrasse 47, 80027 Zurich (Switzerland)
Phone: ++41 43 305 09 7079 - Fax: ++41 43 305 09 98 - E-Mail: info@qualicoat.net - Internet: www.qualicoat.net

APPROVAL for coating materials

The Association for Quality Controls in the Lacquering, Painting and Coating Industry, abbreviated to QUALICOAT, hereby grants an approval based on the test results

Report submitted by (Testing laboratory):	QUALITAL
Date of issue of the Approval:	02.07.2002
Approval valid until:	31.12.2016
System name:	Serie 58L
Valid only for Sublimation:	No
Gloss Category:	3
Class:	1
Structured Finished:	No
Extension for P/P:	No
Metallic colours approved:	Yes
Banned colours:	3022
Manufactured by the company:	RIPOL, Milano
Place:	IT - 20123 Milano
P-No:	P-0433

This product may be described and labeled as follows

Product tested and approved for the quality mark



and may therefore be offered to all companies holding the quality label for paint, lacquer and powder coatings on aluminium for architectural applications

Zurich, 17 December 2015

QUALICOAT

M.C. Panam
Mohammed C. Panam
President

Josef Schoppig
Josef Schoppig
General Secretary

QUALICOAT, P.O. Box 1507, CH-8027 Zurich - Todtstrasse 47, 80027 Zurich (Switzerland)
Phone: ++41 43 305 09 7079 - Fax: ++41 43 305 09 98 - E-Mail: info@qualicoat.net - Internet: www.qualicoat.net

APPROVAL for coating materials

The Association for Quality Controls in the Lacquering, Painting and Coating Industry, abbreviated to QUALICOAT, hereby grants an approval based on the test results

Report submitted by (Testing laboratory):	QUALITAL
Date of issue of the Approval:	16.03.2004
Approval valid until:	31.12.2016
System name:	Serie 52L
Valid only for Sublimation:	No
Gloss Category:	1
Class:	1
Structured Finished:	No
Extension for P/P:	No
Metallic colours approved:	No
Banned colours:	3022
Manufactured by the company:	RIPOL, Milano
Place:	IT - 20123 Milano
P-No:	P-0556

This product may be described and labeled as follows

Product tested and approved for the quality mark



and may therefore be offered to all companies holding the quality label for paint, lacquer and powder coatings on aluminium for architectural applications

Zurich, 17 December 2015

QUALICOAT

M.C. Panam
Mohammed C. Panam
President

Josef Schoppig
Josef Schoppig
General Secretary

QUALICOAT, P.O. Box 1507, CH-8027 Zurich - Todtstrasse 47, 80027 Zurich (Switzerland)
Phone: ++41 43 305 09 7079 - Fax: ++41 43 305 09 98 - E-Mail: info@qualicoat.net - Internet: www.qualicoat.net

APPROVAL for coating materials

The Association for Quality Controls in the Lacquering, Painting and Coating Industry, abbreviated to QUALICOAT, hereby grants an approval based on the test results

Report submitted by (Testing laboratory):	QUALITAL
Date of issue of the Approval:	20.09.2005
Approval valid until:	31.12.2016
System name:	Serie 55R
Valid only for Sublimation:	No
Gloss Category:	1
Class:	1
Structured Finished:	Yes (Textured)
Extension for P/P:	No
Metallic colours approved:	Yes
Banned colours:	2004, 3022
Manufactured by the company:	RIPOL, Milano
Place:	IT - 20123 Milano
P-No:	P-0655

This product may be described and labeled as follows

Product tested and approved for the quality mark



and may therefore be offered to all companies holding the quality label for paint, lacquer and powder coatings on aluminium for architectural applications

Zurich, 17 December 2015

QUALICOAT

M.C. Panam
Mohammed C. Panam
President

Josef Schoppig
Josef Schoppig
General Secretary

QUALICOAT, P.O. Box 1507, CH-8027 Zurich - Todtstrasse 47, 80027 Zurich (Switzerland)
Phone: ++41 43 305 09 7079 - Fax: ++41 43 305 09 98 - E-Mail: info@qualicoat.net - Internet: www.qualicoat.net



[Applications/Markets](#)

[Products](#)

[Services](#)

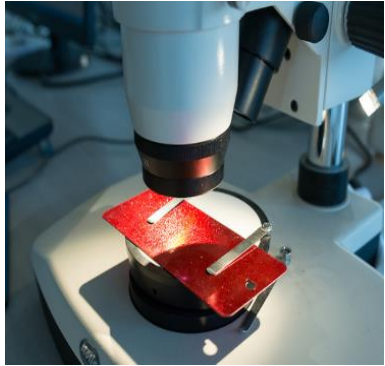
[Certifications](#)

[About us](#)

[Home](#)



Services



- TDS & MSDS
- Colorimetric
- Batch QC
- PSD
- SST
- QUV
- Q-SUN
- On demand



Product Codification

Technical Services

TDS & MSDS

Colorimetric

Batch QC

PSD

SST

QUV

Q-SUN

On demand

Safety Data Sheet 58LB1500730 - BLUE RAL 5007



Safety Data Sheet dated 31/7/2015, version 1

SECTION 1: Identification of the substance/mixture and of the company/undertaking

- 1.1. Product identifier
Mixture identification:
Trade name: BLUE RAL 5007
Trade code: 58LB1500730
- 1.2. Relevant identified uses of the substance or mixture and uses advised against
- 1.3. Details of the supplier of the safety data sheet
Company:
RIPOL S.r.l. - Via Donatori del sangue, 25/A
20010 Santo Stefano Ticino (MI) - Italy
Tel. (+39) 02 9748411
Fax (+39) 02 97484170
Competent person responsible for the safety data sheet:
info@ripol.com
- 1.4. Emergency telephone number
Tel. (+39) 02 9748411
Lun - ven 8.30 - 12.30 / 14.00 - 17.30

MSDS

SECTION 2: Hazards identification

- 2.1. Classification of the substance or mixture
EC regulation criteria 1272/2008 (CLP)
The product is not classified as dangerous according to Regulation EC 1272/2008 (CLP).
Adverse physicochemical, human health and environmental effects:
No other hazards
- 2.2. Label elements
The product is not classified as dangerous according to Regulation EC 1272/2008 (CLP).
Symbols:
None
Hazard statements:
None
Precautionary statements:
None
Special Provisions:
None
Special provisions according to Annex XVII of REACH and subsequent amendments:
None
- 2.3. Other hazards
vPvB Substances: None - PBT Substances: None
Other Hazards:
No other hazards

SECTION 3: Composition/information on ingredients

- 3.1. Substances
N.A.
- 3.2. Mixtures
Hazardous components within the meaning of the CLP regulation and related classification:
None.



TECHNICAL DATA SHEET SERIES 58L

Edition 1 date 01/15, 2013

Mod.73-5801 / ENG

Edition Article 5 - Edition date 25/03/2014

Part. No.: 581w1901630 WHITE RAL 9016 - SMOOTH - GLOSSY
Approvals: QUALICOAT Approval P0433, Cat. 3 and GSB Approval 157a

Powder properties

Chemical composition:	TGIC-free polyester	
Storage:	The product has a shelf life of 36 months if stored in its original packing in a fresh and dry environment at a temperature below 30 °C.	
Cure conditions:	15-25 minutes at 180 °C	12-18 minutes at 190 °C 10-12 minutes at 200 °C (actual temperature of the substrate)
Application method:	corona electrostatic guns or tribo electric guns.	
Application range:	for exterior use.	
Particle size analysis:	It is suitable for electrostatic applications.	
Optimum film thickness:	60-80 µm	
Specific weight:	1,64 Kg/dm ³ ± 0,05	
Product performance:	10,16 m ² / Kg (60 µm)	
Pre-treatment:	Ferrous substrates, zinc coated steel: Aluminium:	Salt of zinc phosphate coating Chromate-free or chromate conversion coatings
Test Thickness:	65 ± 10 µm	UNI EN ISO 2380:2004



Mechanical and Chemical properties

Gloss:	85 ± 5 (60° - 15°@180°C)	UNI EN ISO 2813:2002
Adhesion:	GTO (equivalent to 5B according to ASTM D 3359)	UNI EN ISO 2409:2007
Pencil hardness:	H-2H	UNI 10782:1999
Impact Test:	≥ 2.5 Nm	UNI EN ISO 6272-2:2008
Bending:	5 mm	UNI EN ISO 6890:2008
Erichsen:	≥ 5 mm (no detachments, no cracks)	UNI EN ISO 1520:2007
Hardness Buchholz:	≥ 80	UNI EN ISO 2815:2005
Salt spray resistance:	1000 h (≤ 3 mm)	UNI EN ISO 9227:2008
Salt spray resistance (Acetic):	1000 h (≤ 4 mm)	UNI EN ISO 9227:2008
Q-UVa (340 nm):	200 h (loss of glossiness < 50%)	UNI EN ISO 11507:2007
Humidity resistance:	1000 h	UNI EN ISO 6270:2001
Kesternich corrosion:	> 24 cycles (≤ 1 mm)	UNI EN ISO 3231:1999
Acid / alkali resistance:	Resistant to diluted acids, alkali, and oils at normal temperatures.	

Disclaimer

The information reported herein is not exhaustive. Use of the product for purposes or uses other than those it was designed for, without prior written authorization of RIPOL S.p.A., is done solely under the user's responsibility. RIPOL S.p.A. takes all care to verify that all advice and directives concerning the product indicated in the relevant reports or verbally conveyed by its personnel are correct and applicable. Nevertheless, RIPOL S.p.A. is not responsible for the conditions of the substrate or of numerous other factors that may affect the final performance of the product. Without a prior written agreement, we cannot accept any responsibility on any of our products for damage or loss (including injury or death) due to improper use of the product. All information contained in the report is subject to future modifications consequent to continuous development of our expertise and to our policy of constantly improving our products and therefore is not binding.

Technical Services

TDS & MSDS

Colorimetric

Batch QC

PSD

SST

QUV

Q-SUN

On demand



CIE L*a*b* differenza colore

Data prospetto: 03-May-11
 Ora: 15:52
 Geometria misur std %R SAV SCI UV Inc
 Geometria misur camp %R SAV SCI UV Inc

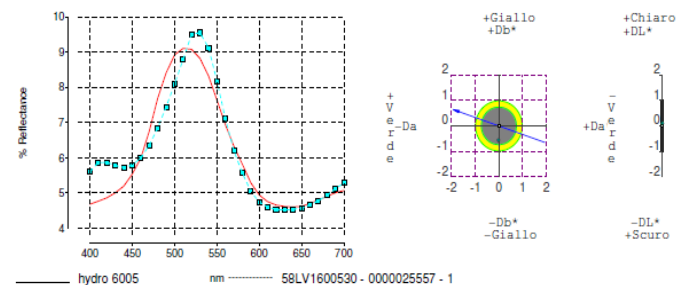
Condizioni illuminante/osservatore
 1) D65 10 Deg
 2) A 10 Deg
 3) F02 10 Deg

Nome standard:	Ill/oss	L*	a*	b*	C*	h
6005	1	31.92	-13.60	4.55	14.34	161.52
	2	30.74	-11.49	1.28	11.56	173.62
	3	31.04	-9.79	3.90	10.54	158.31

Nome campione:

58LV1600530 - 0000025557 - 1	32.04	-13.62	3.99	14.19	163.69	
Data misuraz campione 09-Mar-11	2	30.82	-12.42	1.19	12.48	174.53
Ora misuraz campione 10:49:48	3	31.15	-10.35	2.85	10.74	164.61

Ill/oss	DL*	Da*	Db*	DC*	DH*	DE*
D65 10 Deg	0.11	-0.02	-0.56	-0.15	0.54	0.57
A 10 Deg	0.08	-0.94	-0.09	0.92	0.19	0.95
F02 10 Deg	0.11	-0.56	-1.05	0.20	1.17	1.19



Colorimetric



Technical Services

TDS & MSDS

Colorimetric

Batch QC

PSD

SST

QUV

Q-SUN

On demand



BATCH

COMPANY WITH
QUALITY SYSTEM
CERTIFIED BY DNV
= ISO 9001 =

PRODUCT TEST CERTIFICATE

Report No.	3691
Part No.	58LW1901630
Description	WHITE RAL 9016
Surface finish	SMOOTH - GLOSSY
Batch No.	0000038654
Test date	2/11/2015
Control plan	2238 Revision index 1



TESTING CONDITIONS

Substrate	steel panel 60 x 140 x 0.5 mm aluminum panel 60 x 140 x 0.5 mm (Alloy 5005 - H24) (only for the series 52L, 55R, 56L e 58L)
Cure conditions (substrate)	15' 180°C
Film thickness	60 µm ± 80 µm

BATCH TEST RESULTS

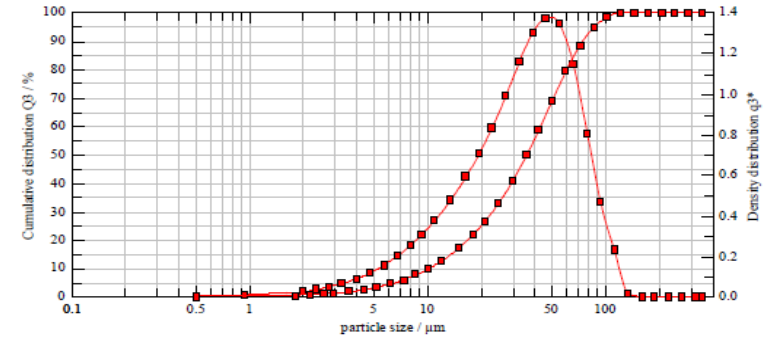
Characteristics	Min.	Max.	Test Value	Unit	Method
Average particle size analysis			34.1	µm	IO 75-11
Gloss level check at 60°	80	90	88	GU	UNI EN ISO 2813:2002
Colour check			OK		Visivo
Surface finish check			OK		Visivo
Impact Test (>= 2.5)			OK	Nm	UNI EN ISO 6272-2:2006
External packaging integrity			OK		Visivo
Presence of labels			OK		Visivo

PSD

Analisi granulometrica
Particle Size analysis

Analisi effettuata con Sympatec HELOS (HI868) - RODOS, R4: 0.5/L.8...350µm 2012-06-15, 19:58:43
Vernice in polvere WARNING: Coarse particles probably exceeding the measuring range.

evaluation: WINDOX 5.2.1.0, HRLD	prodotto: Vernice in polvere
revalidation:	density: 1.00 g/cm³, shape factor: 1.00
reference measurement: 06-15 13:26:08	disp. meth.: RIPOL 2012 M 03
contamination: 0,00 %	C _{opt} = 5,06 %
trigger condition: Condizioni standard ripol	identificazione polvere:
time base: 200,00 ms	Codice: 19LW1901040
start: c_opt >= 2%	Lotto:
valid: 2% <= c_opt <= 25%	Scatola n°: 20
stop: 10s meas.time or 15s real time	Mulino: 1



cumulative distribution

x ₀ /µm	Q ₃ /%	x ₀ /µm	Q ₃ /%	x ₀ /µm	Q ₃ /%	x ₀ /µm	Q ₃ /%
1,80	0,28	7,40	5,93	30,00	40,56	122,00	99,90
2,20	0,56	8,60	7,56	36,00	49,74	146,00	100,00
2,60	0,81	10,00	9,56	42,00	55,42	174,00	100,00
3,00	1,09	12,00	12,52	50,00	68,80	206,00	100,00
3,60	1,59	15,00	17,10	60,00	79,42	246,00	100,00
4,40	2,35	18,00	21,77	72,00	88,48	284,00	100,00
5,20	3,21	21,00	26,48	86,00	94,69	350,00	100,00
6,20	4,29	25,00	32,75	102,00	98,11		

x₁₀ = 10,30 µm x₅₀ = 36,18 µm x₉₀ = 75,43 µm SMD = 20,56 µm VMD = 40,09 µm
x₁₆ = 14,28 µm x₈₄ = 66,07 µm x₉₉ = 111,96 µm S_v = 0,29 m²/cm² S_m = 2918,85 cm²/g

Granulometria media /Average particle size (x50) --> 36,18 µm

RESIDUI TEORICI --> Setaccio 20 µm = 75,09 % Setaccio 40 µm = 44,47 % Setaccio 90µm = 4,46 %

Technical Services

TDS & MSDS
Colorimetric
Batch QC
PSD
SST
QUV
Q-SUN
On demand



**Salt Spray
Equipment**



**QUV- Accelerated
Weathering Tester**



**Q-SUN
Xenon Test Chamber**



Technical Services

TDS & MSDS

Colorimetric

Batch QC

PSD

SST

QUV

Q-SUN

On demand



Oven Data
Logger

Coating thickness
gauge

Gloss measurement





[Applications/Markets](#)

[Products](#)

[Services](#)

[Certifications](#)

[About us](#)

[Home](#)



**Products
Codification**

**How To Read
Alphanumeric 11
Digits Barcodes**

Services

Pos. 1	
Nature	
1	Hybrid EP
2	Epoxy
5	Facade PE
6	Industrial PE

Pos. 2	
Glossiness	
9	High gloss
8/7	Glossy
6/5	Semigloss
4/3	Semimatt
2/1	matt

Pos. 3	
Finish	
L	smooth
B	structured
R	fine textured
M	hammered
A	antiques

RAL code / Lab Code

Pos. 10	
Auxiliary info	
1/3	standard
4/5	internal
6/9	curing

5	8	L	W	1	9	0	1	6	3	0
POS 1	POS 2	POS 3	POS 4	POS 5	POS 6	POS 7	POS 8	POS 9	POS 10	POS 11

Pos. 4	
Color	
A	orange
B	blue
G	grey
M	brown
N	black
P	purple
R	red
S	ivory
T	clear
V	green
W	white
Y	yellow

Pos. 5	
Effect	
1	normal
2	metallic
3	clear
4	clear met
5	marble
6	marble-met
7	bonded

Pos. 11	
Packaging	
0	25 kg Carton Box
2	20 kg Carton Box
4	500 KG BIG Carton -free powder
5	500 KG Textile Big Bag
6	500 KG Big Carton +25 kg sacks
7	500 KG Big Carton +20 kg sacks



[Applications/Markets](#)

[Products](#)

[Services](#)

[Certifications](#)

[About us](#)

[Home](#)

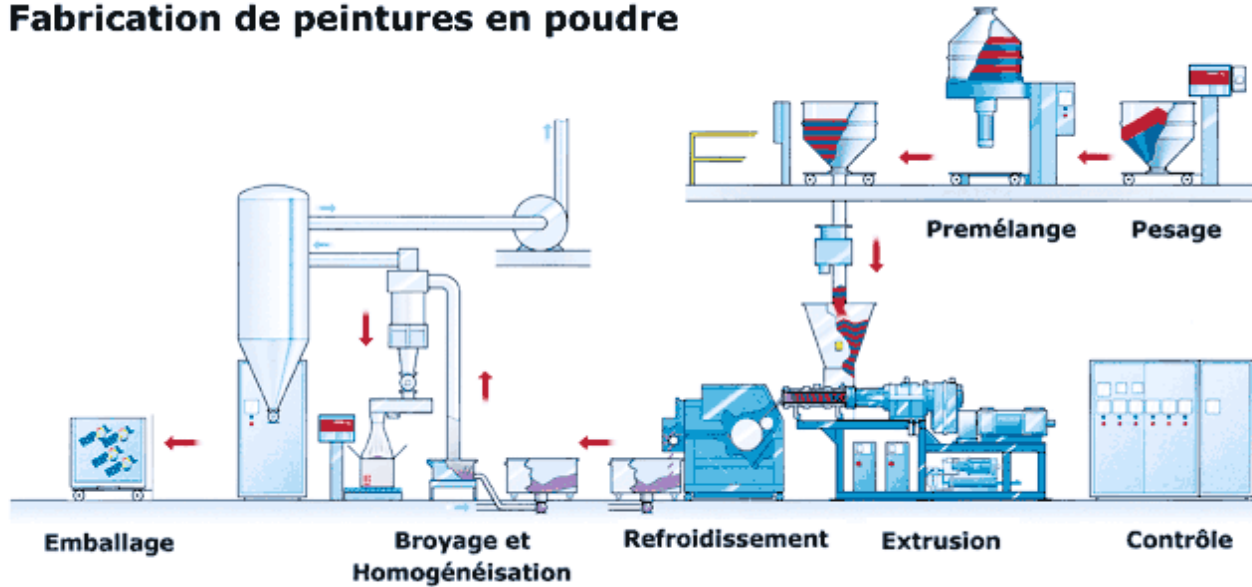


State-of-the-art equipment and Integrated ERP system



Bar Coding (No papers)

Fabrication de peintures en poudre





[Applications/Markets](#)

[Products](#)

[Services](#)

[Certifications](#)

[About us](#)

[Home](#)



Technology - State-of-the-art equipment and ERP

Since from the beginning RIPOL invested in ultra-modern machine technology installing state-of-the-art manufacturing equipment integrated by an **Integrated ERP system** which controls all phases of manufacturing from the acceptance of raw materials to the shipment of finished goods.

The integrated **ERP System** environment allows direct sharing of engineering and manufacturing data through an automated process. The Integrated ERP System guarantees that all departments involved in the product development and manufacturing cycle have access to current and accurate product data. The Integrated ERP System reduces duplication of data, speeds product development cycles and improves new product turnaround time, enhancing the overall process in getting products to market and ultimately sustaining a company's competitive position.





[Applications/Markets](#)

[Products](#)

[Services](#)

[Certifications](#)

[About us](#)

[Home](#)



Corporate Quality Policy

Our comprehensive QCS Quality Control Systems ensure products meet or exceed customer requirements and it covers multiple departments in our organization as well as external groups such as vendors, distributors and most importantly, customers. Quality control covers all phase of the product life cycle (PLC) including design, development, production, distribution, servicing and documentation. It includes regulars on raw material quality, production plant procedures, inspection, management and service processes. Raw materials are ordered according to MRP logic so that company profitability is maximized and stock levels reduced to the minimum. Raw materials are labelled with a bar code and subjected to severe quality controls for acceptance. The operators pick up the raw materials by using a radio frequency terminal. Each weighing station is fitted with interconnected PC, bar code reader, label printer and scales. The planned orders appear directly on each terminal and are filled according to the preset sequence. All these procedures are designed to assure the highest level of quality, safety and **excellent batch-to-batch consistency** of the finished product. Ongoing investments in our facilities, infrastructure and equipment allow us to further improve our performance.



ISHIZUKA GLASS Co., Ltd.
Advanced Glass Company

1880 Kawai-cho, Iwakura-shi, Aichi-ken 482-8510, JAPAN TEL:+81-587-37-3251 / FAX:+81-587-37-3230

2 May 2012

Messrs. Sides S.p.A. – Ripol

ISHIZUKA GLASS CO., LTD.
Advanced Glass Company

REPORT ON ANTI-MICROBIAL TEST RESULT

1. Sample: Polyester / Epoxy Powder Coated Plates

No.	Sample
1.	19L Blank-H (Epoxy polyester)
2.	19L (3-H) (Epoxy polyester)
3.	19L (5-H) (Epoxy polyester)

2. Outline of test:

The test was executed in according with "JIS Z 2801-2010."

<Bacteria used for test>

Escherichia coli NBRC3972
Staphylococcus aureus NBRC12732

3. Test result:

Table 1. Test result of Anti-microbial effect against *Escherichia coli*

Sample	Number of living bacteria			Antimicrobial activity value against Blank	Reduction %
	At beginning (Per cm ²)	After 24 hours (Per piece)	After 24 hours (Per cm ²)		
1. 19L Blank-H	1.1 × 10 ⁴	2.3 × 10 ⁷	1.4 × 10 ⁶	-----	-----
2. 19L (3-H)	1.1 × 10 ⁴	<1 × 10 ³	<6.3	>5.4	>99.999
3. 19L (5-H)	1.1 × 10 ⁴	<1 × 10 ³	<6.3	>5.4	>99.999
Control (Film only)	1.1 × 10 ⁴	4.2 × 10 ⁷	2.6 × 10 ⁶		

ISHIZUKA GLASS Co., Ltd.
Advanced Glass Company

1880 Kawai-cho, Iwakura-shi, Aichi-ken 482-8510, JAPAN TEL:+81-587-37-3251 / FAX:+81-587-37-3230

Table 2. Test result of Anti-microbial effect against *Staphylococcus aureus*

Sample	Number of living bacteria			Antimicrobial activity value against Blank	Reduction %
	At beginning (Per cm ²)	After 24 hours (Per piece)	After 24 hours (Per cm ²)		
1. 19L Blank-H	1.5 × 10 ⁴	2.0 × 10 ⁶	1.3 × 10 ⁵	-----	-----
2. 19L (3-H)	1.5 × 10 ⁴	<1 × 10 ³	<6.3	>4.4	>99.995
3. 19L (5-H)	1.5 × 10 ⁴	<1 × 10 ³	<6.3	>4.4	>99.995
Control (Film only)	1.5 × 10 ⁴	1.0 × 10 ⁶	6.3 × 10 ⁴		

4. Consideration:

Sample 2 and 3 showed antimicrobial efficacy against both *Escherichia coli* and *Staphylococcus aureus* as its activity value exceeded the standard value of 2.0, which means this application has a >99% bacterial reduction rate.

ISHIZUKA GLASS CO., LTD.

阿部 隆紀
Tomoshige Hasegawa
For MANAGER

**RIPOL Series 1
Antimicrobial Test
Result according to
JIS Z-2801-2010**

JIS
JAPANESE
INDUSTRIAL
STANDARD

SEE MORE



ISHIZUKA GLASS Co., Ltd.
Advanced Glass Company

1880 Kawai-cho, Iwakura-shi, Aichi-ken 482-8510, JAPAN TEL:+81-587-37-3251 / FAX:+81-587-37-3230

6 August 2012

Messrs. Sides S.p.A. - Ripol

ISHIZUKA GLASS CO., LTD.
Advanced Glass Company

REPORT ON ANTI-MICROBIAL TEST RESULT

1. Sample: Polyester Coated Plates

No.	Sample
1.	58L Blank P White
2.	58L 6-P White
3.	58L 8-P White
4.	58L Blank P Grey
5.	58L 6-P Grey
6.	58L 8-P Grey

2. Outline of test:

The test was executed in according with "JIS Z 2801-2010."

<Bacteria used for test>

Escherichia coli NBRC3972
Staphylococcus aureus NBRC12732

3. Test result:

Table 1. Test result of Anti-microbial effect against *Escherichia coli*

Sample	Number of living bacteria			Antimicrobial activity value against Blank	Reduction %
	At beginning (Per cm ²)	After 24 hours (Per piece)	After 24 hours (Per cm ²)		
1. 58L Blank P White	1.2 × 10 ⁴	3.9 × 10 ⁷	4.3 × 10 ⁶	-----	-----
2. 58L 6-P White	1.2 × 10 ⁴	<1 × 10 ²	<1.1 × 10	>5.5	>99.9997
3. 58L 8-P White	1.2 × 10 ⁴	<1 × 10 ²	<1.1 × 10	>5.5	>99.9997
4. 58L Blank P Grey	1.2 × 10 ⁴	1.0 × 10 ⁷	1.1 × 10 ⁶	-----	-----
5. 58L 6-P Grey	1.2 × 10 ⁴	1.0 × 10 ³	1.1 × 10 ⁶	0	0
6. 58L 8-P Grey	1.2 × 10 ⁴	<1 × 10 ²	<1.1 × 10	>5.0	>99.999
Control (Film only)	1.2 × 10 ⁴	1.2 × 10 ⁷	1.3 × 10 ⁶		

ISHIZUKA GLASS Co., Ltd.
Advanced Glass Company

1880 Kawai-cho, Iwakura-shi, Aichi-ken 482-8510, JAPAN TEL:+81-587-37-3251 / FAX:+81-587-37-3230

Table 2. Test result of Anti-microbial effect against *Staphylococcus aureus*

Sample	Number of living bacteria			Antimicrobial activity value against Blank	Reduction %
	At beginning (Per cm ²)	After 24 hours (Per piece)	After 24 hours (Per cm ²)		
1. 58L Blank P White	1.4 × 10 ⁴	3.0 × 10 ⁵	3.3 × 10 ³	-----	-----
2. 58L 6-P White	1.4 × 10 ⁴	<1 × 10 ²	<1.1 × 10	>3.4	>99.96
3. 58L 8-P White	1.4 × 10 ⁴	<1 × 10 ²	<1.1 × 10	>3.4	>99.96
4. 58L Blank P Grey	1.4 × 10 ⁴	3.2 × 10 ⁵	3.6 × 10 ⁴	-----	-----
5. 58L 6-P Grey	1.4 × 10 ⁴	2.6 × 10 ⁴	2.9 × 10 ³	1.1	91
6. 58L 8-P Grey	1.4 × 10 ⁴	<1 × 10 ²	<1.1 × 10	>3.5	>99.96
Control (Film only)	1.4 × 10 ⁴	7.9 × 10 ⁵	8.8 × 10 ⁴		

4. Consideration:

Regarding white color sample, both Sample 2 and 3 showed antimicrobial efficacy against both *Escherichia coli* and *Staphylococcus aureus* as its activity value exceeded the standard value of 2.0, which means this application has a >99% bacterial reduction rate. On the other hand, Grey sample of Sample 6 showed antimicrobial efficacy against both bacteria as its activity value exceeded the standard value of 2.0, which means the application has a >99% bacterial reduction rate.

ISHIZUKA GLASS CO., LTD.

Tomohige Hasegawa
MANAGER

**RIPOL Series 5/6
Antimicrobial Test
Result according to
JIS Z-2801-2010**

JIS
JAPANESE
INDUSTRIAL
STANDARD